

EXHIBIT "A"

SRP JOB NUMBER: T3533742
SRP JOB NAME: PAPAGO GOLF HOUSE NB
TTRRSS: 1N4E4 AND 5

DATE: 07-02-2024
PAGE: 1 OF 5

AN EASEMENT WITHIN TWO PARCELS OF LAND AS DESCRIBED PER DOCKET 2950, PAGE 216 AND DOCKET 5267, PAGE 468 MARICOPA COUNTY RECORDER (MCR) LOCATED IN THE EAST HALF OF SECTION 5 AND THE NORTHWEST QUARTER OF SECTION 4, TOWNSHIP 1 NORTH, RANGE 4 EAST OF THE GILA AND SALT RIVER MERIDIAN, MARICOPA COUNTY, ARIZONA, BEING MORE PARTICULARLY DESCRIBED AS FOLLOWS;

COMMENCING AT THE NORTHEAST CORNER OF SAID SECTION 5, BEING A BUREAU OF LAND MANAGEMENT MONUMENT, FROM WHICH THE NORTH QUARTER CORNER OF SAID SECTION 5, BEING A BRASS CAP IN HANDHOLE, BEARS SOUTH 89 DEGREES 37 MINUTES 45 SECONDS WEST, A DISTANCE OF 2673.67 FEET (**BASIS OF BEARINGS**);

THENCE ALONG THE EAST LINE OF SAID SECTION 5, SOUTH 00 DEGREES 19 MINUTES 25 SECONDS WEST, A DISTANCE OF 1347.21 FEET;

THENCE SOUTH 31 DEGREES 55 MINUTES 56 SECONDS EAST, A DISTANCE OF 136.13 FEET TO THE **POINT OF BEGINNING**;

THENCE SOUTH 33 DEGREES 03 MINUTES 12 SECONDS EAST, A DISTANCE OF 8.08 FEET;

THENCE SOUTH 65 DEGREES 03 MINUTES 57 SECONDS WEST, A DISTANCE OF 34.56 FEET;

THENCE SOUTH 15 DEGREES 40 MINUTES 16 SECONDS WEST, A DISTANCE OF 28.98 FEET;

THENCE SOUTH 57 DEGREES 38 MINUTES 19 SECONDS WEST, A DISTANCE OF 78.76 FEET;

THENCE SOUTH 89 DEGREES 32 MINUTES 20 SECONDS WEST, A DISTANCE OF 142.15 FEET;

THENCE SOUTH 88 DEGREES 43 MINUTES 49 SECONDS WEST, A DISTANCE OF 136.02 FEET;

THENCE NORTH 53 DEGREES 03 MINUTES 46 SECONDS WEST, A DISTANCE OF 102.36 FEET TO THE BEGINNING OF A TANGENT CURVE, CONCAVE SOUTHWESTERLY, HAVING A RADIUS OF 241.00 FEET;

THENCE NORTHWESTERLY, ALONG SAID CURVE, THROUGH A CENTRAL ANGLE OF 02 DEGREES 13 MINUTES 44 SECONDS, AN ARC LENGTH OF 9.38 FEET;

THENCE SOUTH 38 DEGREES 18 MINUTES 01 SECONDS WEST, A DISTANCE OF 14.65 FEET;

THENCE NORTH 51 DEGREES 41 MINUTES 59 SECONDS WEST, A DISTANCE OF 12.00 FEET;

THENCE NORTH 38 DEGREES 18 MINUTES 01 SECONDS EAST, A DISTANCE OF 21.64 FEET TO THE BEGINNING OF A NON-TANGENT CURVE, CONCAVE SOUTHWESTERLY, HAVING A RADIUS OF 249.00 FEET AND A RADIAL LINE THAT BEARS SOUTH 32 DEGREES 03 MINUTES 09 SECONDS WEST;

EXHIBIT "A"

SRP JOB NUMBER: T3533742
SRP JOB NAME: PAPAGO GOLF HOUSE NB
TTRRSS: 1N4E4 AND 5

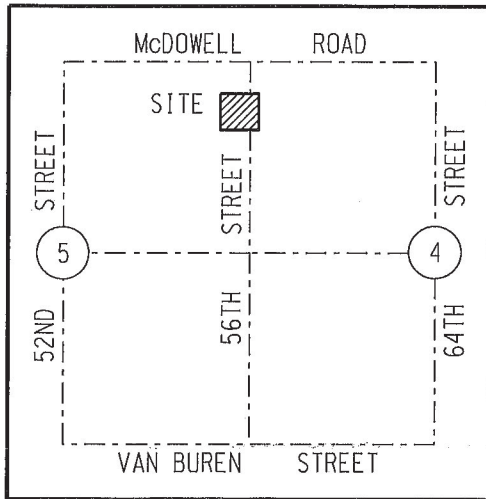
DATE: 07-02-2024
PAGE: 2 OF 5

THENCE SOUTHEASTERLY, ALONG SAID CURVE, THROUGH A CENTRAL ANGLE OF 04 DEGREES 53 MINUTES 06 SECONDS, AN ARC LENGTH OF 21.23 FEET;
THENCE SOUTH 53 DEGREES 03 MINUTES 46 SECONDS EAST, A DISTANCE OF 99.59 FEET;
THENCE NORTH 88 DEGREES 43 MINUTES 49 SECONDS EAST, A DISTANCE OF 133.31 FEET;
THENCE NORTH 89 DEGREES 32 MINUTES 20 SECONDS EAST, A DISTANCE OF 139.92 FEET;
THENCE NORTH 57 DEGREES 38 MINUTES 19 SECONDS EAST, A DISTANCE OF 73.41 FEET;
THENCE NORTH 15 DEGREES 40 MINUTES 16 SECONDS EAST, A DISTANCE OF 29.59 FEET;
THENCE NORTH 65 DEGREES 03 MINUTES 57 SECONDS EAST, A DISTANCE OF 37.10 FEET TO SAID **POINT OF BEGINNING**.
SAID EASEMENT CONTAINS AN AREA OF 4,484 SQUARE FEET OR 0.10 ACRES, MORE OR LESS.

END OF DESCRIPTION



EXHIBIT "A"



VICINITY MAP (NTS)
T1N, R4E
G&SRM

LEGEND

- SECTION AND CENTERLINE
- PROPERTY LINE
- LIMITS OF SRP EASEMENT
- EXISTING EASEMENT
- TIE LINE
- ◆ SECTION CORNER AS NOTED
-

ABBREVIATION TABLE

APN	ASSESSOR'S PARCEL NUMBER
EPAD	ELECTRICAL EQUIPMENT PAD
DKT	DOCKET
PG	PAGE
BLM	BUREAU OF LAND MANAGEMENT
MCR	MARICOPA COUNTY RECORDER
(M)	MEASURED
LVI	LAST VISUAL INSPECTION
NTS	NOT TO SCALE
SRP	SALT RIVER PROJECT



BASIS OF BEARINGS:
BASED ON THE MARICOPA COUNTY
LOW DISTORTION PROJECTION
COORDINATE SYSTEM.

CAUTION

THE EASEMENT LOCATION AS HEREON DELINEATED MAY CONTAIN HIGH VOLTAGE ELECTRICAL EQUIPMENT, NOTICE IS HEREBY GIVEN THAT THE LOCATION OF UNDERGROUND ELECTRICAL CONDUCTORS OR FACILITIES MUST BE VERIFIED AS REQUIRED BY ARIZONA REVISED STATUTES, SECTION 40-380.21, ET. SEQ., ARIZONA BLUE STAKE LAW, PRIOR TO ANY EXCAVATION.

NOTES

THIS EXHIBIT IS INTENDED TO ACCOMPANY AN EASEMENT. ALL PARCELS SHOWN WERE PLOTTED FROM RECORD INFORMATION, AND NO ATTEMPT HAS BEEN MADE TO VERIFY THE LOCATION OF ANY BOUNDARIES SHOWN. THIS IS NOT AN ARIZONA BOUNDARY SURVEY.


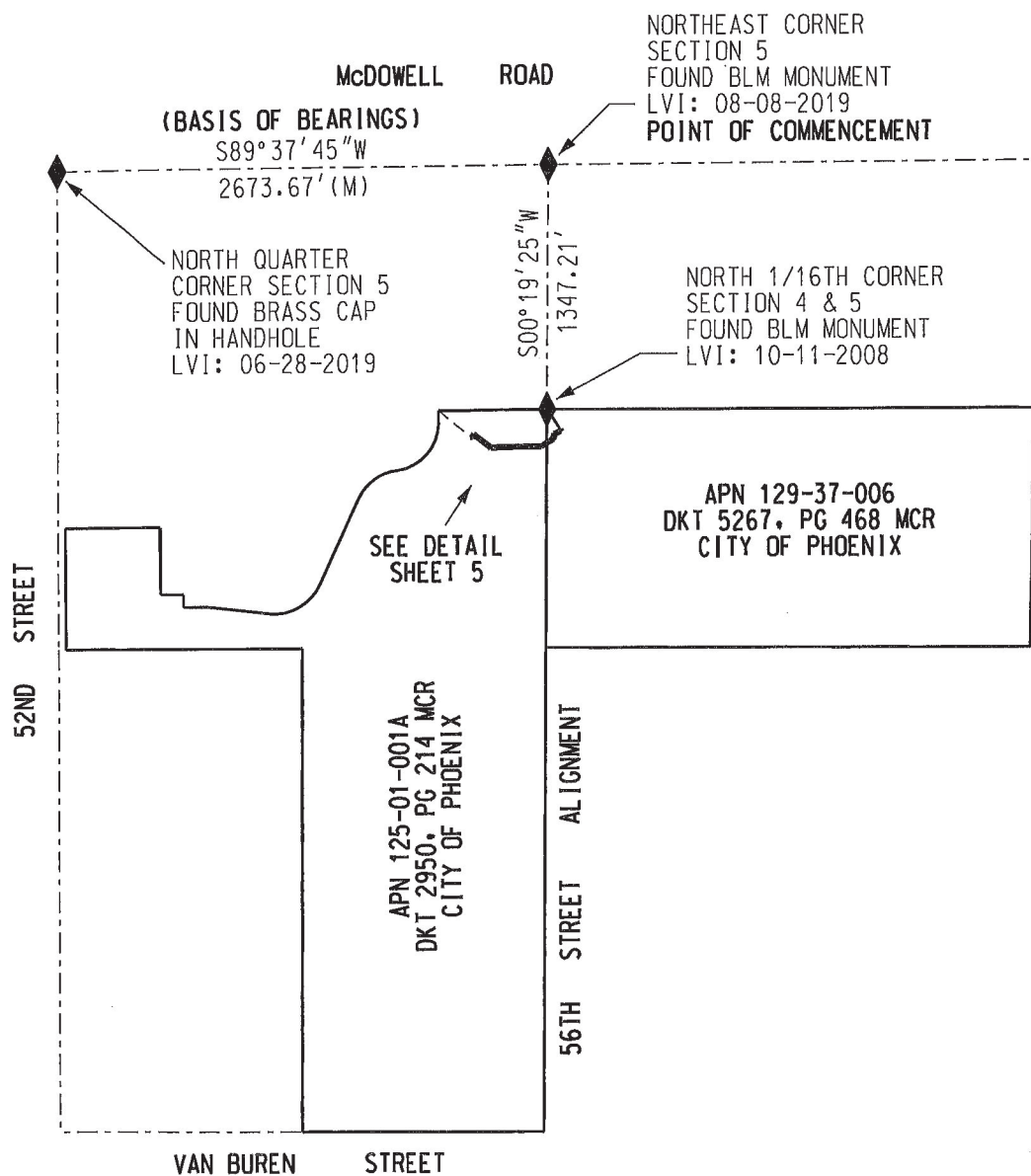
SALT RIVER PROJECT AGRICULTURAL IMPROVEMENT & POWER DISTRICT		 SURVEY DIVISION LAND DEPARTMENT
SRP I.O. NUMBER: T3533742	SCALE: NTS	
LJ NUMBER: 98658	SHEET: 3 OF 5	PAPAGO GOLF HOUSE NB E1/2 SEC 5 NW1/4 SEC 4 T.1 N..R.4 E. 19.94E - 5.69N
AGENT: BENAVIDEZ	SHEET SIZE: 8.5"x11"	
DRAWN: HICK	REVISION: 0	
CHECKED BY:	CREW CHIEF: GENTNER	
DATE: 07-02-2024	BW FIELD DATE: 06-17-2024	

EXHIBIT "A"



SALT RIVER PROJECT
 AGRICULTURAL IMPROVEMENT & POWER DISTRICT

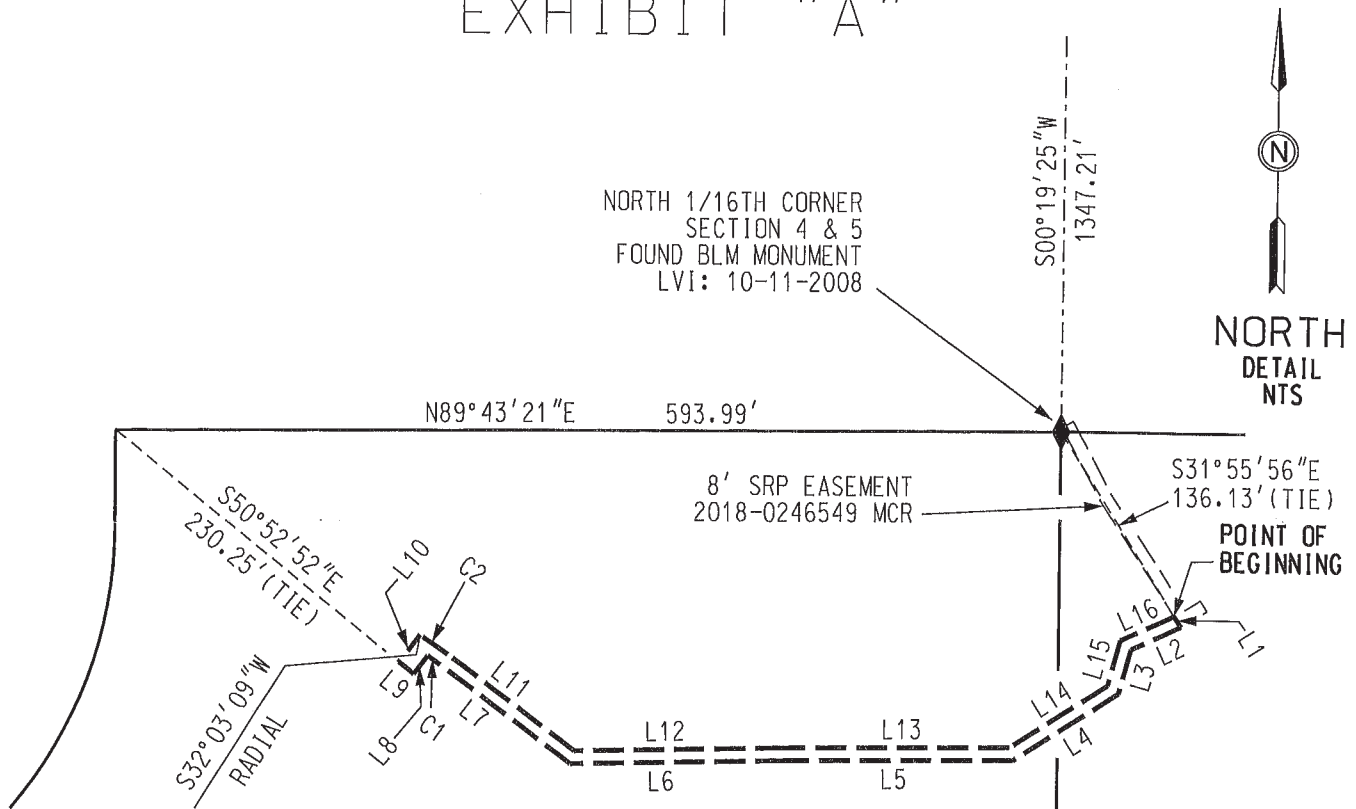


SURVEY DIVISION
 LAND DEPARTMENT

SRP I.O. NUMBER: T3533742	SCALE: 1" = 1000'
LJ NUMBER: 98658	SHEET: 4 OF 5
AGENT: BENAVIDEZ	SHEET SIZE: 8.5"x11"
DRAWN: HICK	REVISION: 0
CHECKED BY:	CREW CHIEF: GENTNER
DATE: 07-02-2024	FIELD DATE: 06-17-2024

PAPAGO GOLF HOUSE NB
 E1/2 SEC 5 NW1/4 SEC 4
 T.1 N., R.4 E.
 19.94E - 5.69N

EXHIBIT "A"



LINE TABLE		
LINE	BEARING	DISTANCE
L1	S33°03'12"E	8.08'
L2	S65°03'57"W	34.56'
L3	S15°40'16"W	28.98'
L4	S57°38'19"W	78.76'
L5	S89°32'20"W	142.15'
L6	S88°43'49"W	136.02'
L7	N53°03'46"W	102.36'
L8	S38°18'01"W	14.65'
L9	N51°41'59"W	12.00'
L10	N38°18'01"E	21.64'
L11	S53°03'46"E	99.59'
L12	N88°43'49"E	133.31'
L13	N89°32'20"E	139.92'
L14	N57°38'19"E	73.41'
L15	N15°40'16"E	29.59'
L16	N65°03'57"E	37.10'

EASEMENT AREA = 4,484 SQUARE FEET
OR 0.010 ACRES MORE OR LESS

APN 125-01-001A
DKT 2950, PG 216 MCR
CITY OF PHOENIX

CURVE TABLE			
CURVE	RADIUS	DELTA	LENGTH
C1	241.00'	02°13'44"	9.38'
C2	249.00'	04°53'06"	21.23'

SALT RIVER PROJECT
AGRICULTURAL IMPROVEMENT & POWER DISTRICT



SURVEY DIVISION
LAND DEPARTMENT

SRP I.O. NUMBER: T3533742	SCALE: NTS
LJ NUMBER: 98658	SHEET: 5 OF 5
AGENT: BENAVIDEZ	SHEET SIZE: 8.5"x11"
DRAWN: HICK	REVISION: 0
CHECKED BY:	CREW CHIEF: GENTNER
DATE: 07-02-2024 BW	FIELD DATE: 06-17-2024

PAPAGO GOLF HOUSE NB
E1/2 SEC 5 NW1/4 SEC 4
T.1 N., R.4 E.
19.94E - 5.69N

