



City of Phoenix

PLANNING AND DEVELOPMENT DEPARTMENT

**GENERAL PLAN AMENDMENT
STAFF ANALYSIS
July 14, 2017**

<u>Application:</u>	GPA-CTYW-1-17
<u>Applicant:</u>	Planning Commission
<u>Current Map:</u>	Street Classification Map
<u>Requested Change:</u>	Additions/Deletions
<u>Reason for Requested Change:</u>	To update the map with additions and deletions of new platted roadways.
<u>Staff Recommendation:</u>	Approval

BACKGROUND

The Street Classification Map was first adopted in 1961. The Map was last updated in 2007 with additions and deletions of new platted roadways. The Street Classification Map provides information on the City's street network, identifying the alignment and minimum right-of-way standards for existing and planned streets.

This is a "housekeeping" amendment intended to propose non-controversial changes for the map that do not warrant their own individual General Plan Amendments. The common reasons for changing the map are new road construction, map clean up or corrections, and traffic changes that require changing the street class or street cross section.

Exhibit 1 is a table that provides a detailed explanation of each individual amendment. The villages with changes are Camelback East, Deer Valley, Desert View, Encanto, Estrella, Maryvale, North Gateway, Paradise Valley, Rio Vista and South Mountain. Exhibits 2-11 are maps that show the location of each numbered street segment by village.

There are no proposed Street Classification Map changes to the Ahwatukee Foothills, Alhambra, Central City, Laveen, and North Mountain villages. As a result, these villages will not hear this request.

Writer

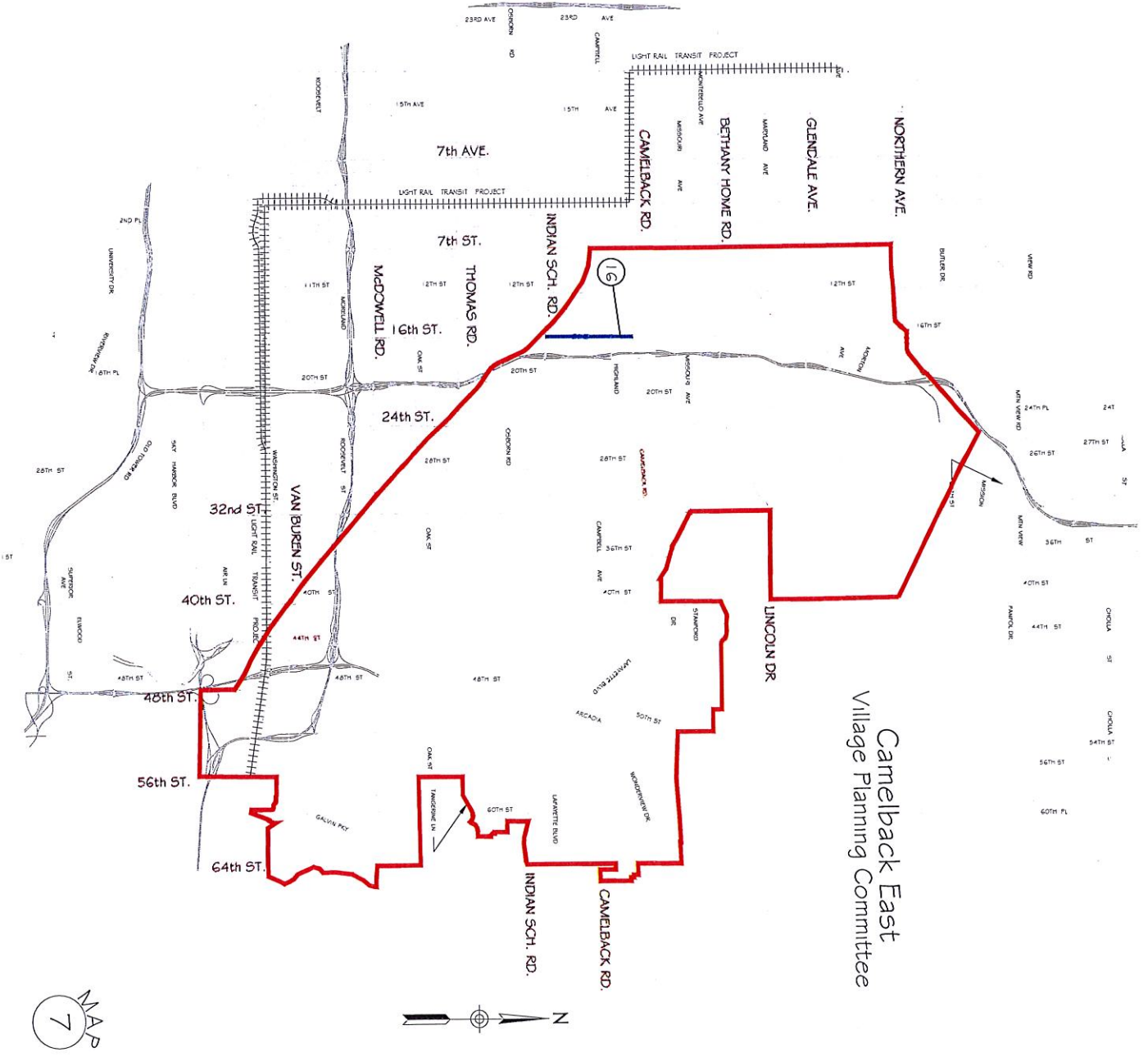
Craig Mavis
July 14, 2017

Exhibits

1. General Plan and Street Classification Map Amendments 2015
2. Camelback East Street Classification Map Amendments
3. Deer Valley Street Classification Map Amendments
4. Desert View Street Classification Map Amendments
5. Encanto Street Classification Map Amendments
6. Estrella Street Classification Map Amendments
7. Maryvale Street Classification Map Amendments
8. North Gateway Street Classification Map Amendments
9. Paradise Valley Street Classification Map Amendments
10. Rio Vista Street Classification Map Amendments
11. South Mountain Street Classification Map Amendments

EXHIBIT 2

2011barndawg OCT11/11 1:00pm



Camelback East
Village Planning Committee

EXHIBIT 3

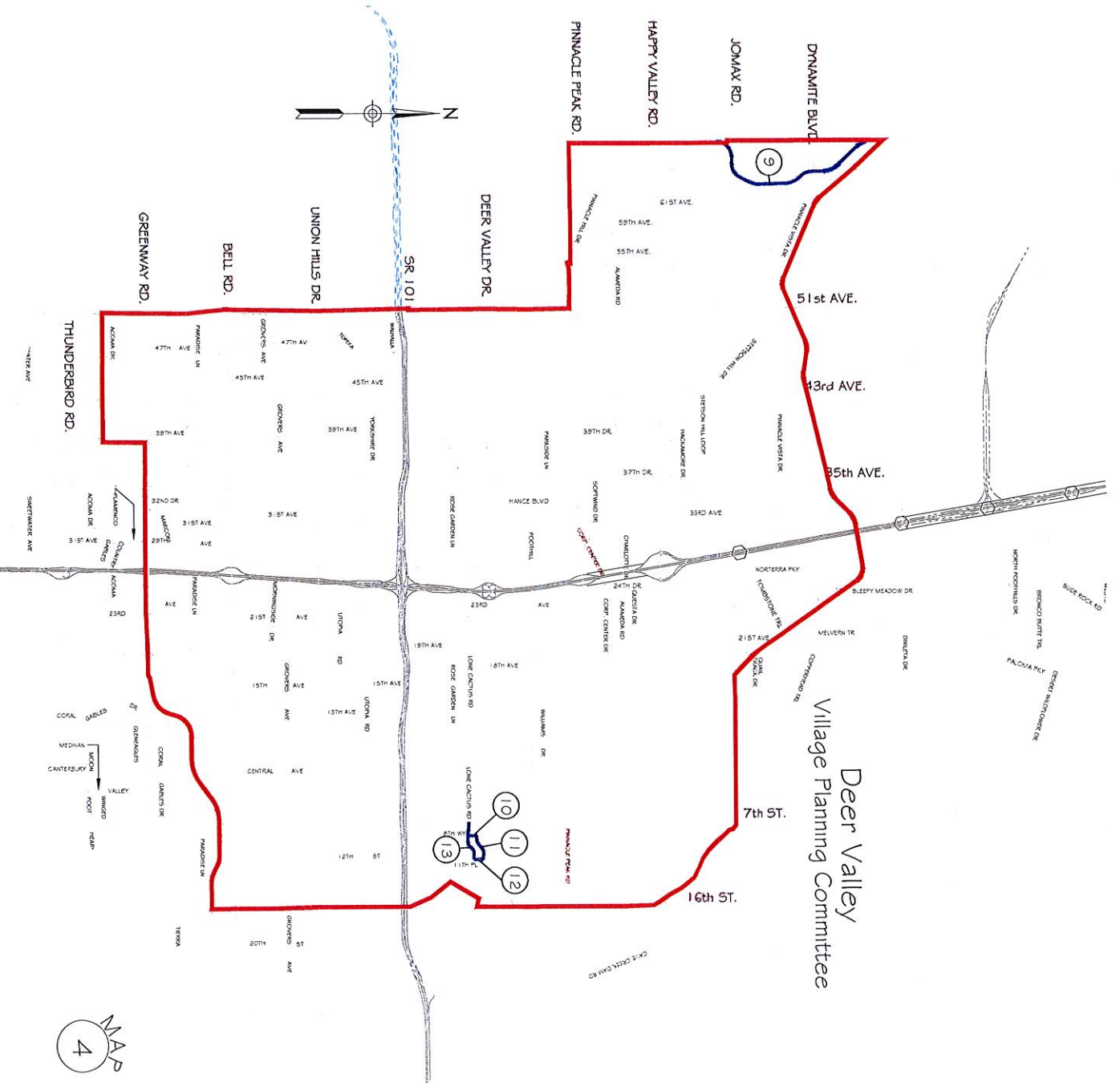
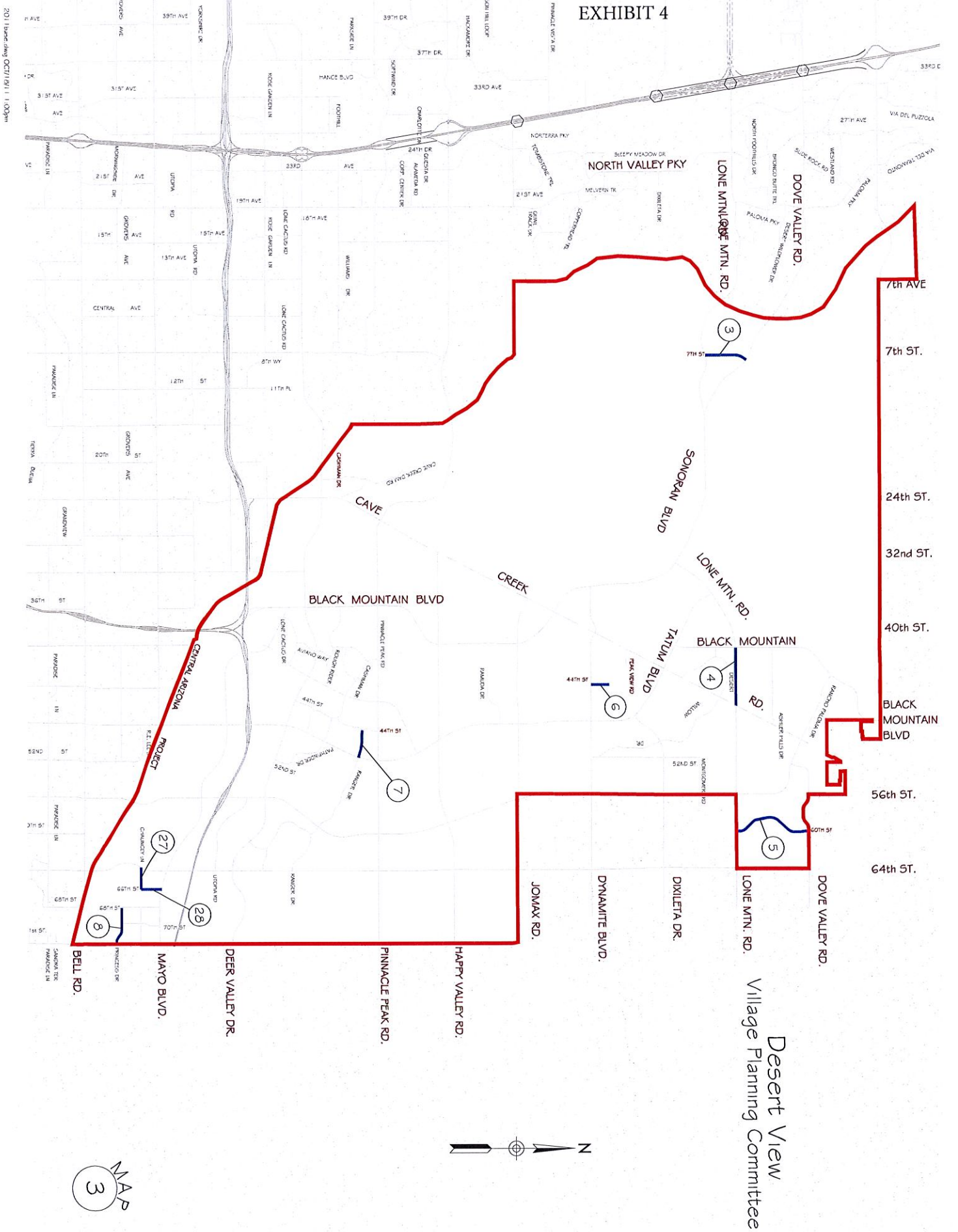


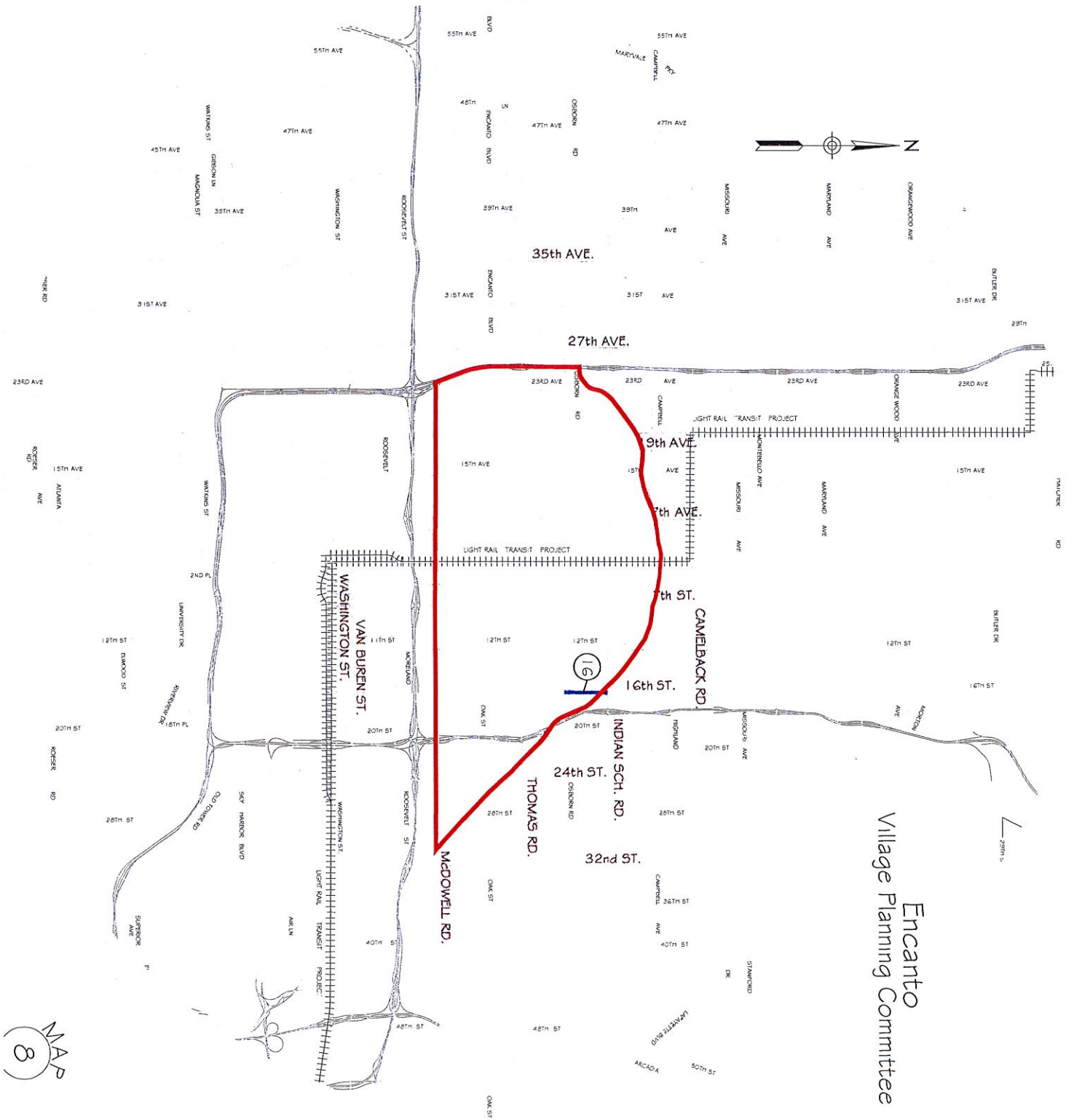
EXHIBIT 4



Desert View
Village Planning Committee

MAP
3

EXHIBIT 5



Encanto
Village Planning Committee

EXHIBIT 6

Estrella
Village Planning Committee

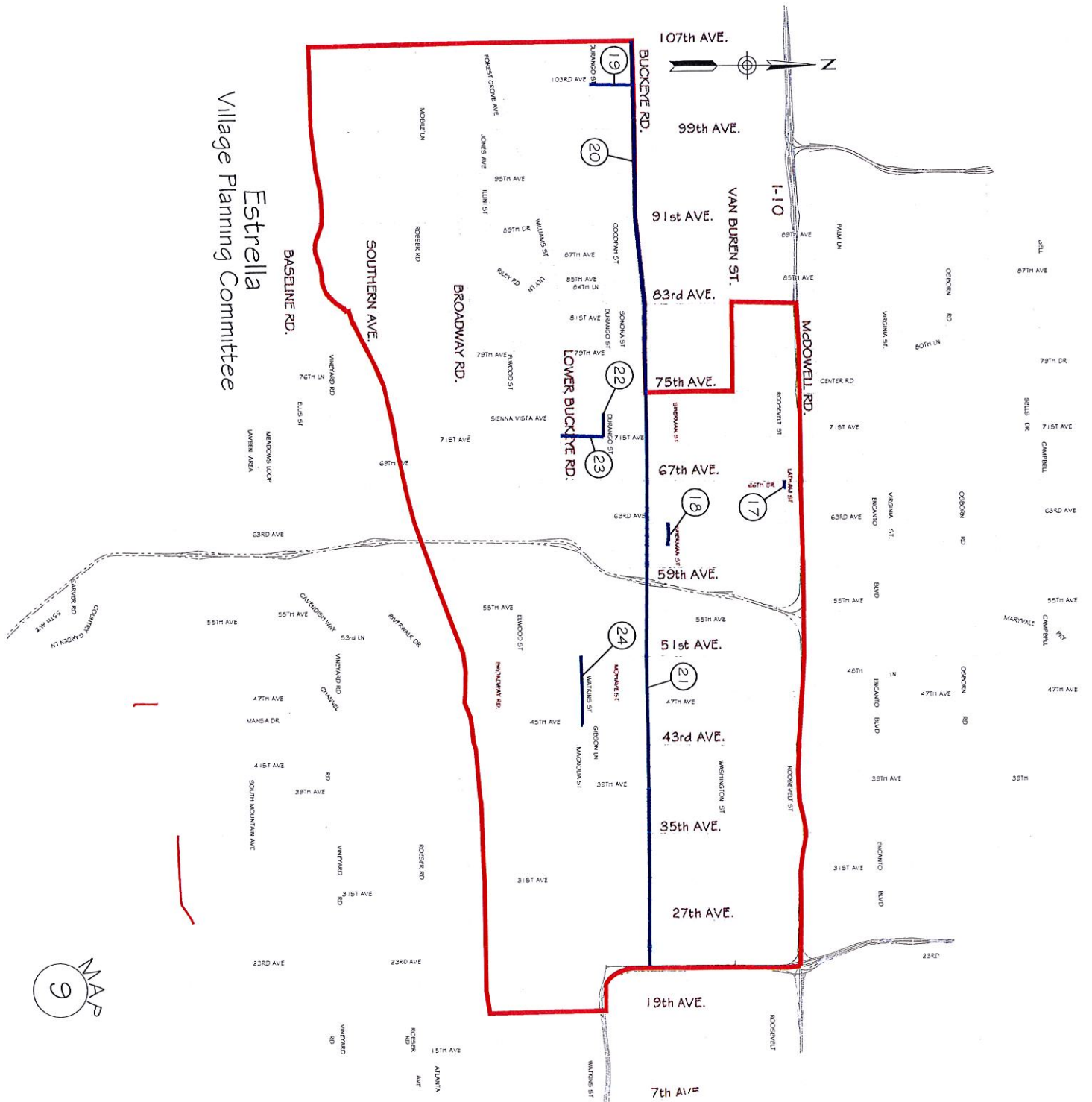


EXHIBIT 7

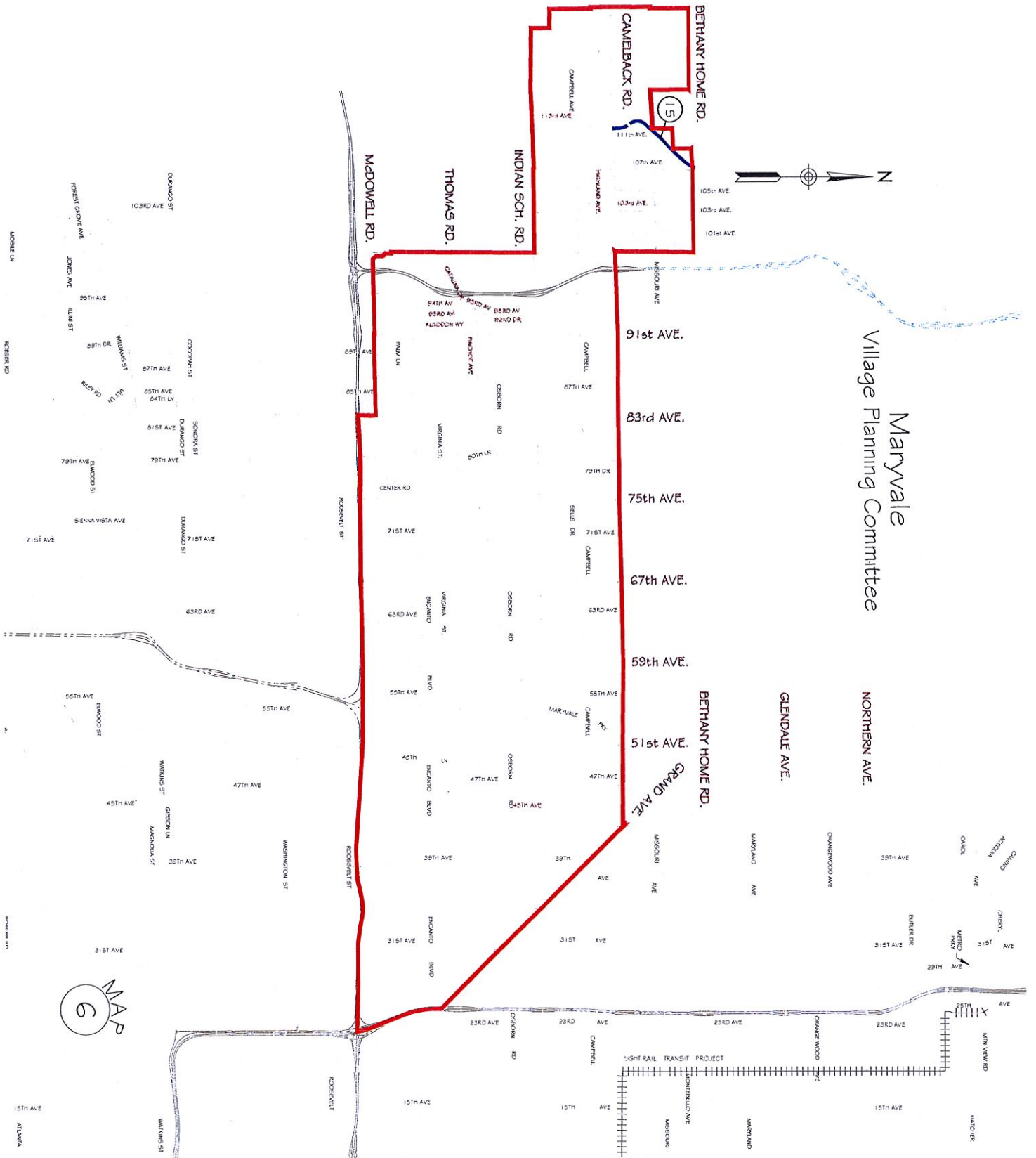


EXHIBIT 8

North Gateway
Village Planning Committee

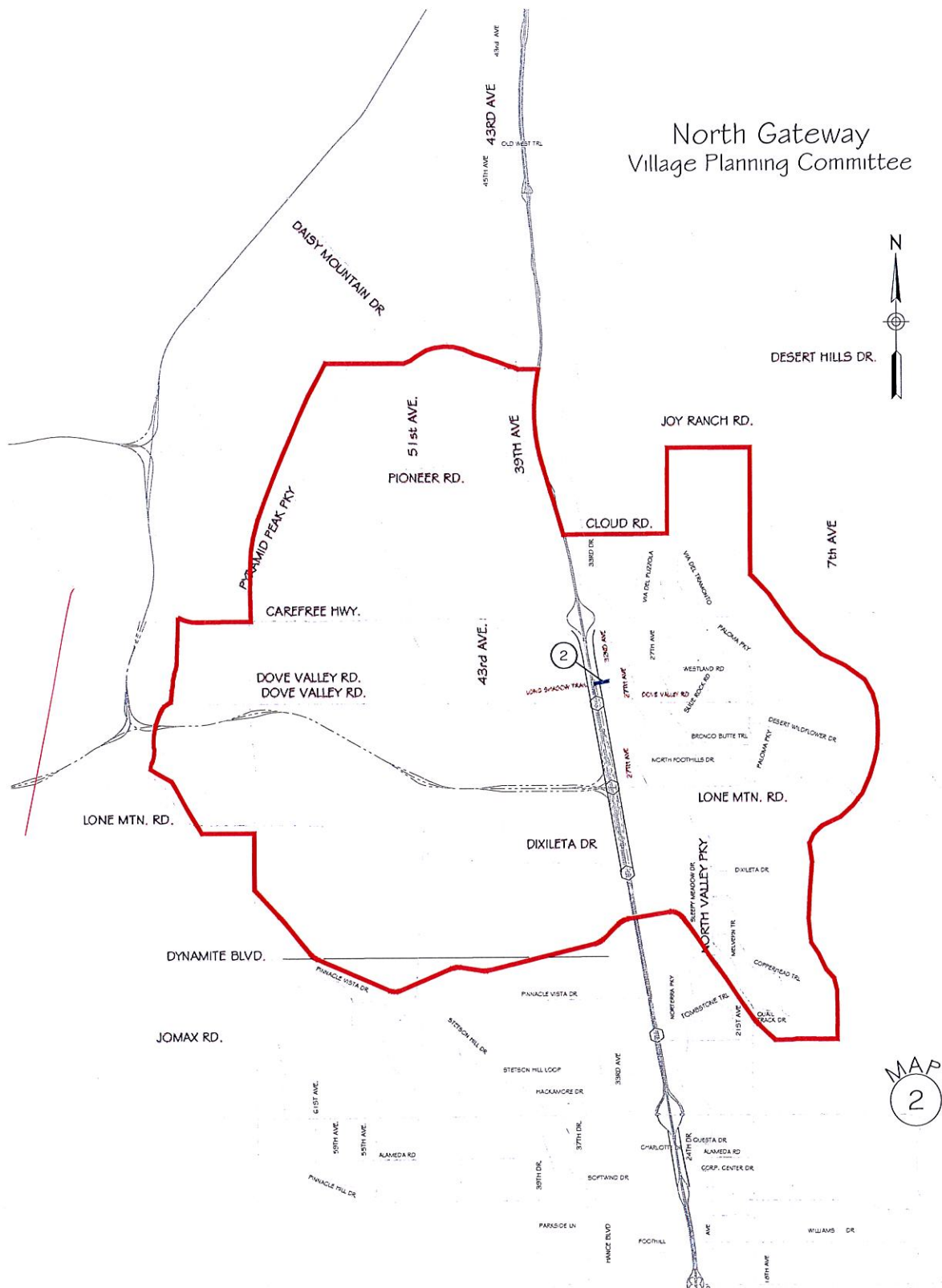
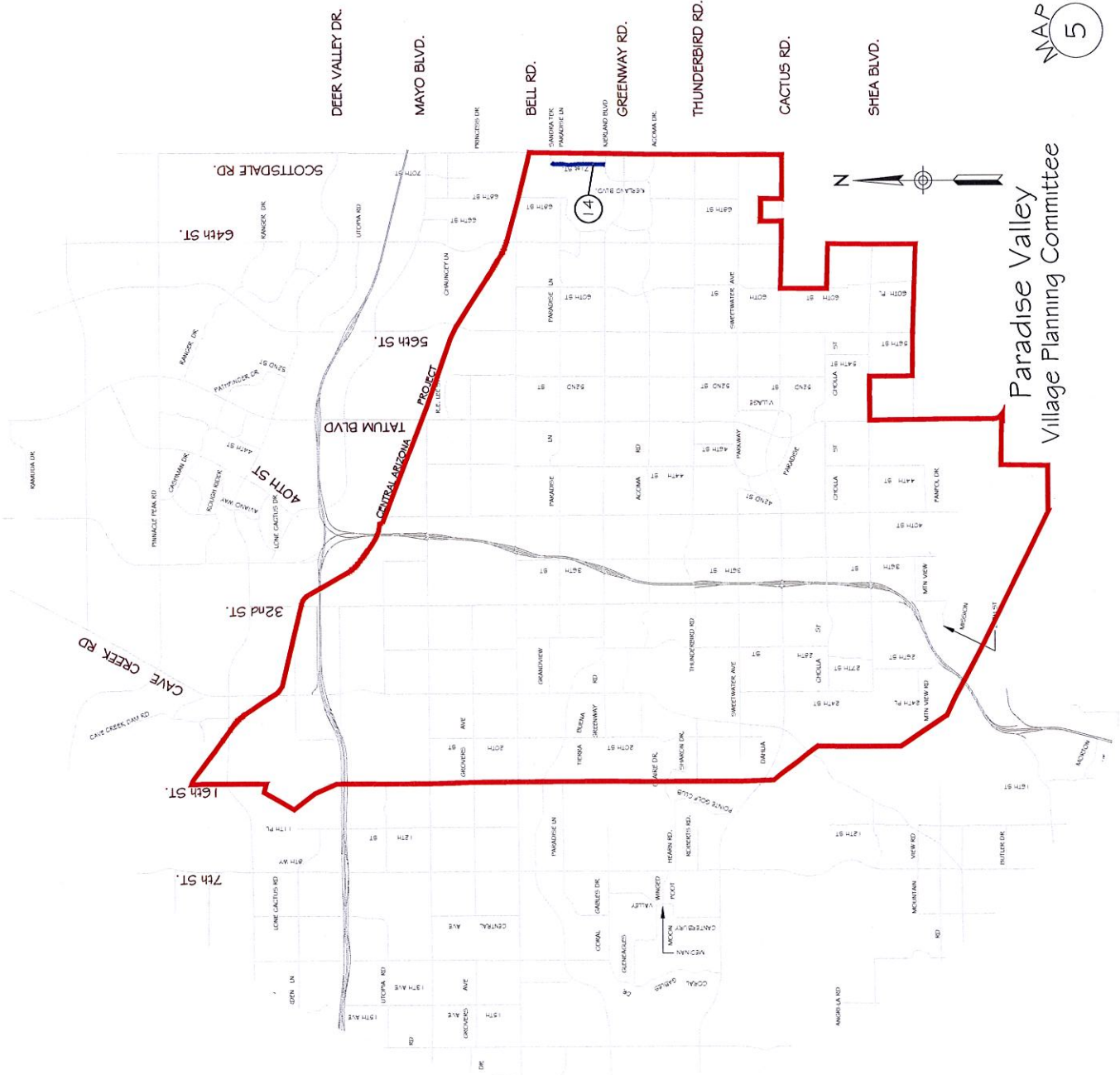


EXHIBIT 9



MAP 5
Paradise Valley
Village Planning Committee

EXHIBIT 10

Rio Vista
Village Planning Committee

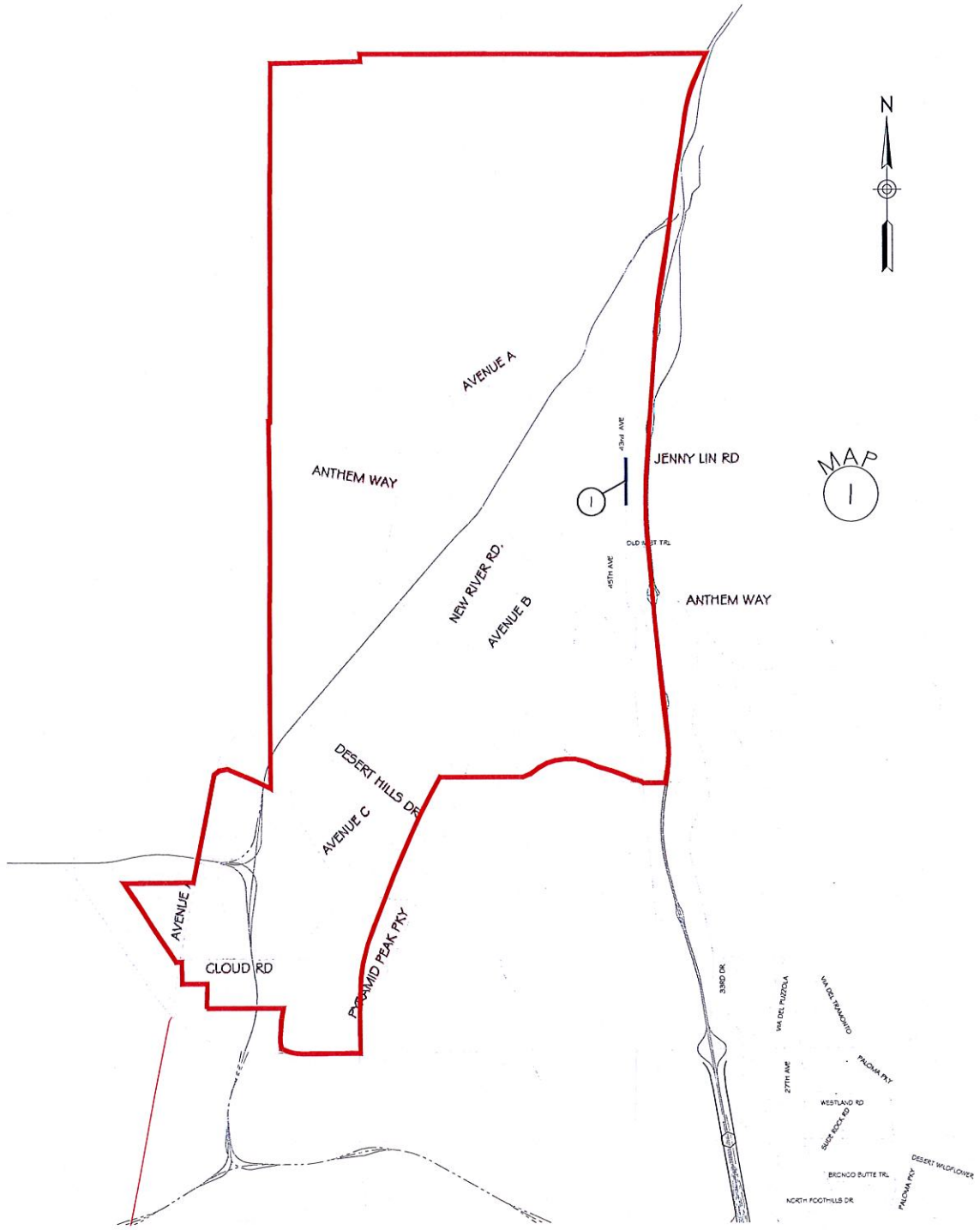
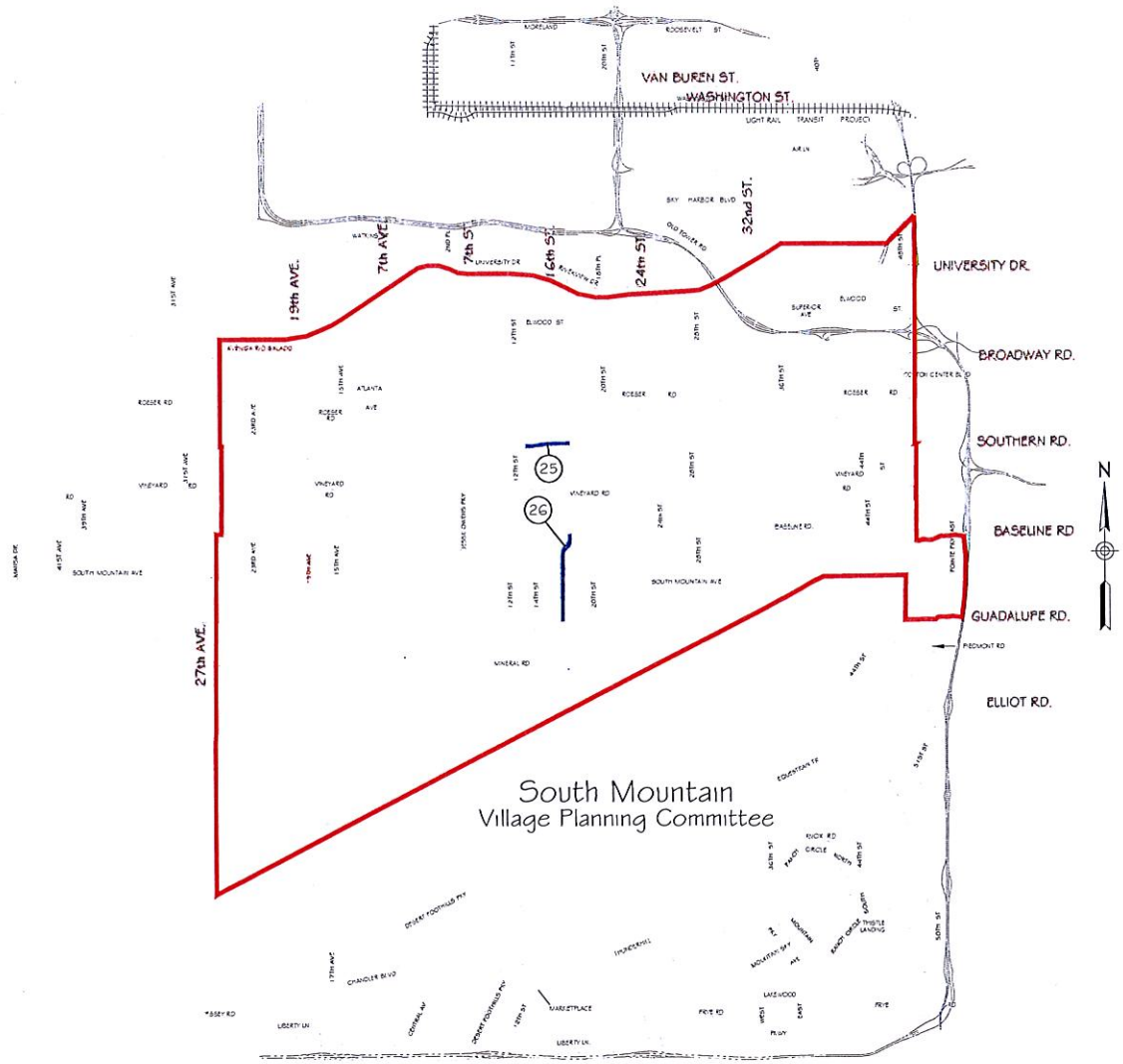


EXHIBIT 11



MAP
10