

LEGAL DESCRIPTION FOR
PUBLIC UTILITY EASEMENT
APN 105-42-002B

That part of that certain parcel of land described in Document No. 83-510648, Records of Maricopa County, Arizona, being situated in the East Half of Section 23, Township 1 North, range 2 East of the Gila and Salt River Meridian, Maricopa County, Arizona, more particularly described as follows:

Commencing at the Aluminum Cap marking the East Quarter Corner of said Section 23, from which the City of Phoenix Brass Cap in hand hole marking the Northeast Corner of said Section 23 bears North 02°29'13" West, a distance of 2,846.18 feet;

Thence North 02°29'13" West, along the East line of the Northeast Quarter of said Section 23, a distance of 18.15 feet to the True Point of Beginning;

Thence South 87°26'45" West, a distance of 59.70 feet;
Thence South 88°50'36" West, a distance of 905.16 feet;
Thence South 85°29'42" West, a distance of 27.22 feet;

Thence South 73°01'52" West, a distance of 17.72 feet to a point on the South line of said certain parcel of land;

Thence South 89°25'35" West, along said South line, a distance of 1,245.44 feet;

Thence North 00°34'25" West, a distance of 8.00 feet;
Thence North 89°25'35" East, a distance of 24.04 feet;
Thence North 00°00'00" East, a distance of 30.67 feet;
Thence North 90°00'00" West, a distance of 2.25 feet;
Thence North 00°00'00" East, a distance of 4.00 feet;
Thence North 90°00'00" West, a distance of 4.00 feet;
Thence North 00°00'00" East, a distance of 6.00 feet;
Thence North 90°00'00" East, a distance of 4.00 feet;
Thence North 00°00'00" East, a distance of 10.33 feet;
Thence North 90°00'00" East, a distance of 12.50 feet;
Thence South 00°00'00" East, a distance of 20.33 feet;
Thence North 90°00'00" West, a distance of 2.25 feet;
Thence South 00°00'00" East, a distance of 30.59 feet;
Thence North 89°25'35" East, a distance of 608.83 feet;
Thence North 00°00'00" East, a distance of 48.84 feet;
Thence North 90°00'00" West, a distance of 2.17 feet;

Thence North 00°00'00" East, a distance of 13.59 feet;
Thence North 45°00'00" West, a distance of 16.73 feet;

Thence North 00°00'00" East, a distance of 148.47 feet to the beginning of a tangent curve of 88.00 foot radius, concave Easterly;

Thence Northerly, along said curve, through a central angle of 30°26'00", a distance of 46.74 feet;

Thence North 30°28'41" East, a distance of 285.50 feet;
Thence North 67°30'00" West, a distance of 150.83 feet;
Thence South 90°00'00" West, a distance of 129.80 feet;
Thence North 00°00'00" West, a distance of 172.36 feet;
Thence North 90°00'00" West, a distance of 0.75 feet;
Thence North 00°00'00" East, a distance of 4.00 feet;
Thence North 90°00'00" West, a distance of 4.00 feet;
Thence North 00°00'00" East, a distance of 6.00 feet;
Thence North 90°00'00" East, a distance of 4.00 feet;
Thence North 00°00'00" East, a distance of 5.50 feet;
Thence North 90°00'00" East, a distance of 9.50 feet;
Thence South 00°00'00" East, a distance of 15.50 feet;
Thence North 90°00'00" West, a distance of 0.75 feet;
Thence South 00°00'00" East, a distance of 164.36 feet;
Thence North 90°00'00" East, a distance of 123.39 feet;
Thence South 67°30'00" East, a distance of 165.50 feet;
Thence North 30°30'56" East, a distance of 9.91 feet;
Thence South 59°29'04" East, a distance of 12.33 feet;
Thence South 30°30'56" West, a distance of 26.17 feet;
Thence North 59°29'04" West, a distance of 1.50 feet;
Thence South 30°30'56" West, a distance of 10.34 feet;
Thence North 59°29'04" West, a distance of 14.66 feet;

Thence South 30°28'41" West, a distance of 268.65 feet to a point on a 80.00 foot radius non-tangent curve, whose center bears South 59°34'08" East;

Thence Southerly, along said curve, through a central angle of 30°25'52", a distance of 42.49 feet;

Thence South 00°00'00" West, a distance of 145.16 feet;
Thence South 45°00'00" East, a distance of 3.63 feet;
Thence South 90°00'00" East, a distance of 13.60 feet;
Thence South 00°00'00" East, a distance of 26.17 feet;

Thence North 90°00'00" West, a distance of 2.17 feet;
Thence South 00°00'00" West, a distance of 48.76 feet;
Thence North 89°25'35" East, a distance of 581.25 feet;
Thence North 73°01'52" East, a distance of 26.75 feet;

Thence North 85°17'11" East, a distance of 28.26 feet to a point on a 123.69 foot radius non-tangent curve, whose center bears North 22°59'22" East;

Thence Northwesterly, along said curve, through a central angle of 60°56'37", a distance of 131.56 feet;

Thence North 06°14'47" West, a distance of 144.43 feet;
Thence North 61°19'00" West, a distance of 6.55 feet;
Thence North 28°41'00" East, a distance of 4.00 feet;
Thence North 61°19'00" West, a distance of 4.00 feet;
Thence North 28°41'00" East, a distance of 6.00 feet;
Thence South 61°19'00" East, a distance of 4.00 feet;
Thence North 28°41'00" East, a distance of 5.50 feet;
Thence South 61°19'00" East, a distance of 7.50 feet;
Thence South 28°41'00" West, a distance of 2.88 feet;

Thence South 06°14'47" East, a distance of 154.25 feet to a point on a 115.69 foot radius non-tangent curve, whose center bears North 83°56'21" East;

Thence Southeasterly, along said curve, through a central angle of 69°54'18", a distance of 141.15 feet;

Thence North 88°50'36" East, a distance of 272.93 feet;
Thence South 45°16'00" East, a distance of 5.57 feet;
Thence North 88°50'36" East, a distance of 613.49 feet;

Thence North 87°26'45" East, a distance of 59.61 feet to a point on the East line of the Northeast Quarter of said Section 23;

Thence South 02°29'13" East, along said East line, a distance of 8.00 feet to the True Point of Beginning.

Containing 0.664 Acres, more or less.



Expires: 3/31/17

Page 3 of 10

EXHIBIT "A"

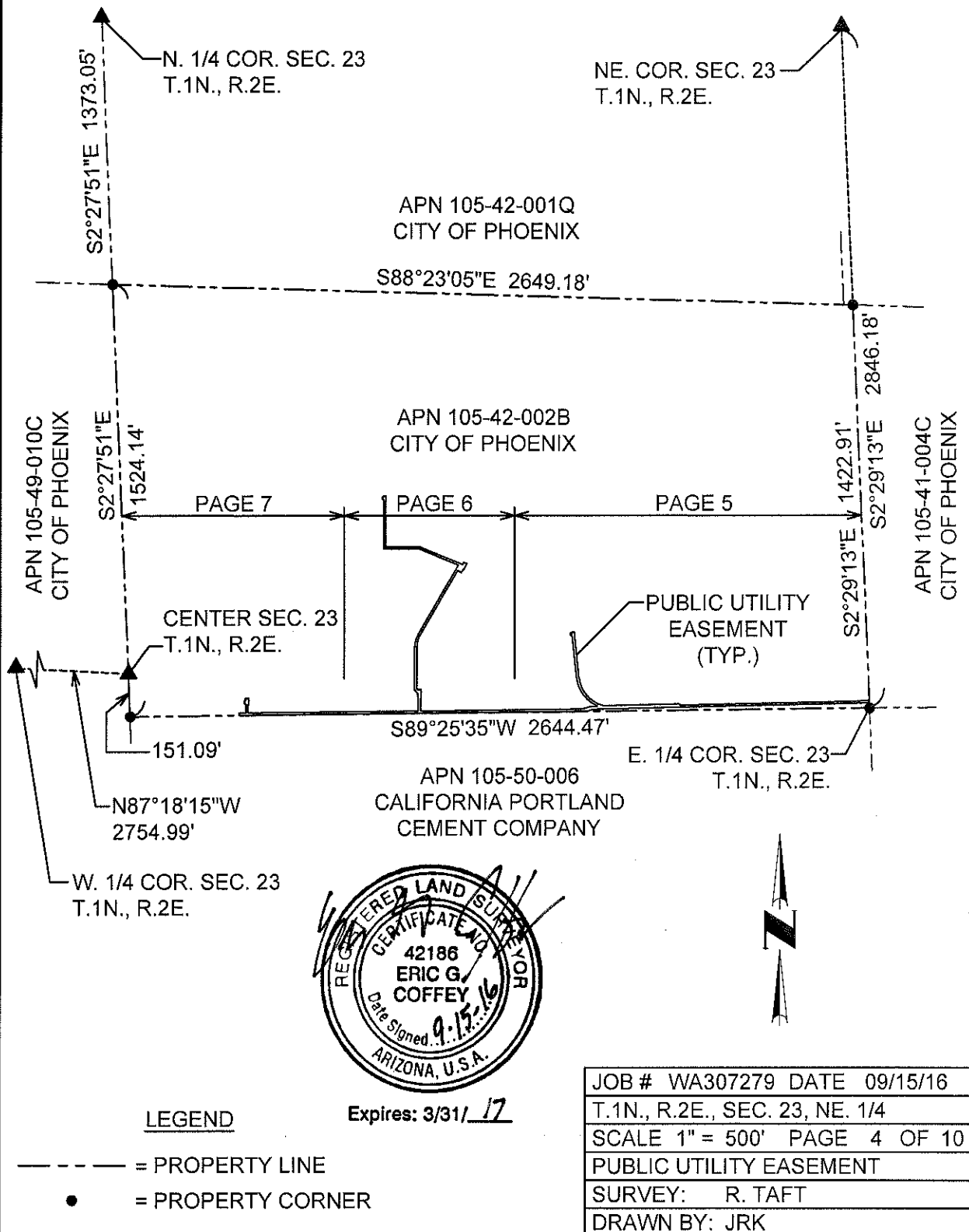
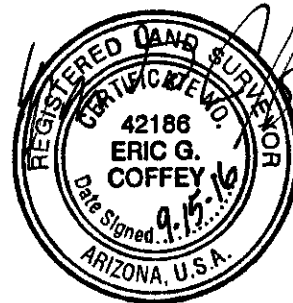
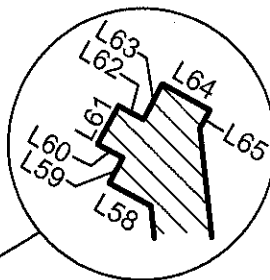
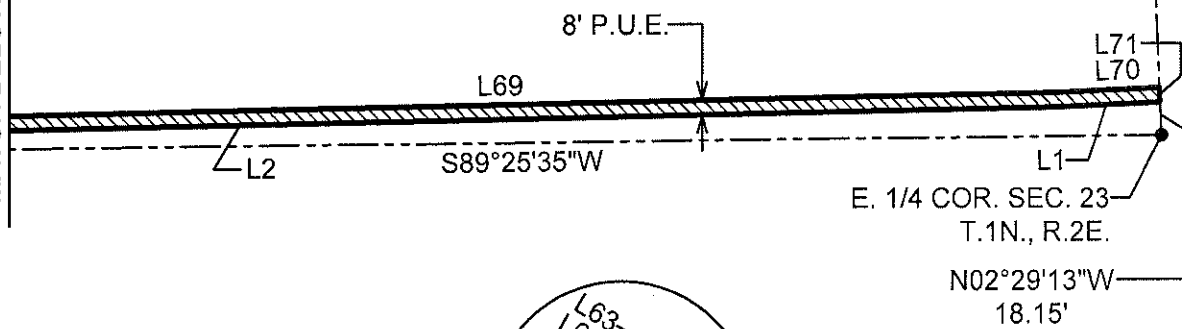


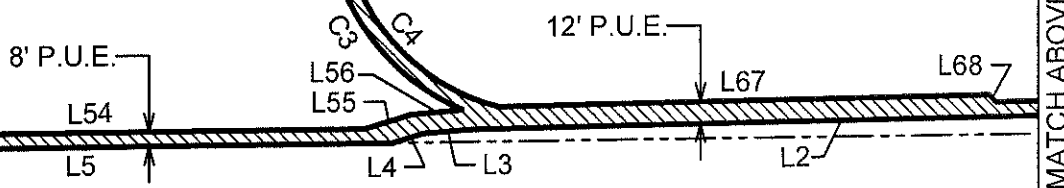
EXHIBIT "A"

MATCH BELOW RIGHT



Expires: 3/31/17

MATCH PAGE 6



MATCH ABOVE LEFT

LEGEND

P.U.E. = PUBLIC UTILITY EASEMENT

 = EASEMENT AREA

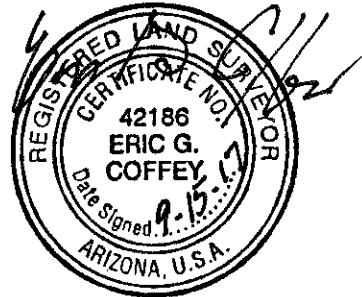
 = PROPERTY LINE

 = PROPERTY CORNER

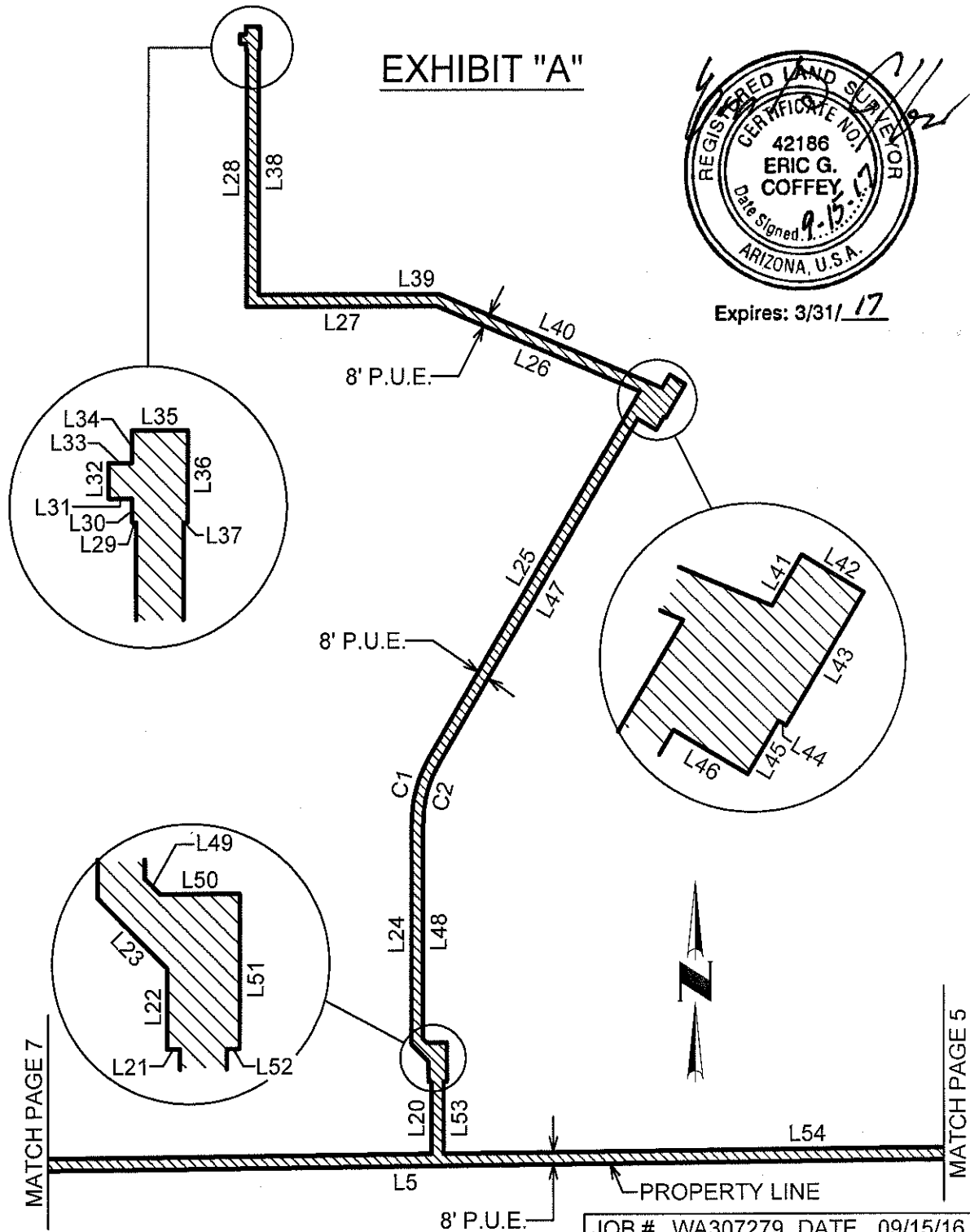


JOB #	WA307279	DATE	09/15/16
T.1N., R.2E., SEC. 23, NE. 1/4			
SCALE 1" = 100' PAGE 5 OF 10			
PUBLIC UTILITY EASEMENT			
SURVEY: R. TAFT			
DRAWN BY: JRK			

EXHIBIT "A"



Expires: 3/31/17



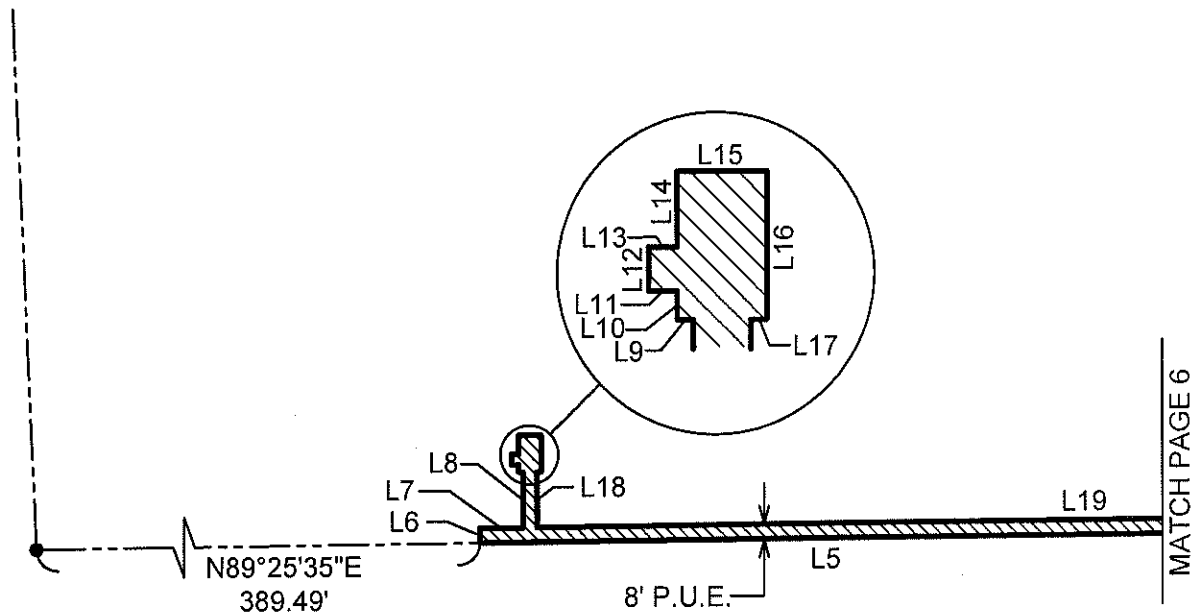
LEGEND

P.U.E. = EASEMENT AREA

 = EASEMENT AREA

JOB #	WA307279	DATE	09/15/16
T.1N., R.2E., SEC. 23, NE. 1/4			
SCALE 1" = 100' PAGE 6 OF 10			
PUBLIC UTILITY EASEMENT			
SURVEY: R. TAFT			
DRAWN BY: JRK			

EXHIBIT "A"



Expires: 3/31/17

LEGEND

P.U.E. = PUBLIC UTILITY EASEMENT

 = EASEMENT AREA

--- = PROPERTY LINE

● = PROPERTY CORNER



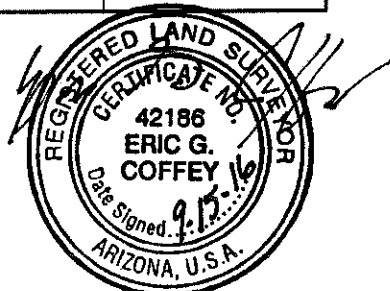
JOB #	WA307279	DATE	09/15/16
T.1N., R.2E., SEC. 23, NE. 1/4			
SCALE 1" = 100' PAGE 7 OF 10			
PUBLIC UTILITY EASEMENT			
SURVEY: R. TAFT			
DRAWN BY: JRK			

MATCH PAGE 6

LINE TABLE		
NO.	LENGTH	BEARING
L1	59.70	S87°26'45"W
L2	905.16	S88°50'36"W
L3	27.22	S85°29'42"W
L4	17.72	S73°01'52"W
L5	1245.44	S89°25'35"W
L6	8.00	N00°34'25"W
L7	24.04	N89°25'35"E
L8	30.67	N00°00'00"E
L9	2.25	N90°00'00"W
L10	4.00	N00°00'00"E
L11	4.00	N90°00'00"W
L12	6.00	N00°00'00"E
L13	4.00	N90°00'00"E
L14	10.33	N00°00'00"E
L15	12.50	N90°00'00"E
L16	20.33	S00°00'00"E
L17	2.25	N90°00'00"W
L18	30.59	S00°00'00"E
L19	608.83	N89°25'35"E

EXHIBIT "A"

LINE TABLE		
NO.	LENGTH	BEARING
L20	48.84	N00°00'00"E
L21	2.17	N90°00'00"W
L22	13.59	N00°00'00"E
L23	16.73	N45°00'00"W
L24	148.47	N00°00'00"E
L25	285.50	N30°28'41"E
L26	150.83	N67°30'00"W
L27	129.80	S90°00'00"W
L28	172.36	N00°00'00"W
L29	0.75	N90°00'00"W
L30	4.00	N00°00'00"E
L31	4.00	N90°00'00"W
L32	6.00	N00°00'00"E
L33	4.00	N90°00'00"E
L34	5.50	N00°00'00"E
L35	9.50	N90°00'00"E
L36	15.50	S00°00'00"E
L37	0.75	N90°00'00"W
L38	164.36	S00°00'00"E



Expires: 3/31/17

JOB #	WA307279	DATE	09/15/16
T.1N., R.2E., SEC. 23, NE. 1/4			
SCALE	N/A	PAGE	8 OF 10
PUBLIC UTILITY EASEMENT			
SURVEY:		R. TAFT	
DRAWN BY:		JRK	

EXHIBIT "A"

LINE TABLE		
NO.	LENGTH	BEARING
L39	123.39	N90°00'00"E
L40	165.50	S67°30'00"E
L41	9.91	N30°30'56"E
L42	12.33	S59°29'04"E
L43	26.17	S30°30'56"W
L44	1.50	N59°29'04"W
L45	10.34	S30°30'56"W
L46	14.66	N59°29'04"W
L47	268.65	S30°28'41"W
L48	145.16	S00°00'00"W
L49	3.63	S45°00'00"E
L50	13.60	S90°00'00"E
L51	26.17	S00°00'00"E
L52	2.17	N90°00'00"W
L53	48.76	S00°00'00"W
L54	581.25	N89°25'35"E
L55	26.75	N73°01'52"E
L56	28.26	N85°17'11"E
L57	144.43	N06°14'47"W

LINE TABLE		
NO.	LENGTH	BEARING
L58	6.55	N61°19'00"W
L59	4.00	N28°41'00"E
L60	4.00	N61°19'00"W
L61	6.00	N28°41'00"E
L62	4.00	S61°19'00"E
L63	5.50	N28°41'00"E
L64	7.50	S61°19'00"E
L65	2.88	S28°41'00"W
L66	154.25	S06°14'47"E
L67	272.93	N88°50'36"E
L68	5.57	S45°16'00"E
L69	613.49	N88°50'36"E
L70	59.61	N87°26'45"E
L71	8.00	S02°29'13"E



Expires: 3/31/ 17

JOB #	WA307279	DATE	09/15/16
T.1N., R.2E., SEC. 23, NE. 1/4			
SCALE 1" = 100' PAGE 9 OF 10			
PUBLIC UTILITY EASEMENT			
SURVEY: R. TAFT			
DRAWN BY: JRK			

EXHIBIT "A"

CURVE TABLE						
NO.	ARC	RADIUS	DELTA	TANGENT	CHORD	CHORD-BEARING
C1	46.74	88.00	30°26'00"	23.94	46.19	S15°13'00"W
C2	42.49	80.00	30°25'52"	21.76	41.99	S15°12'56"W
C3	131.56	123.69	60°56'37"	72.78	125.45	N36°32'19"W
C4	141.15	115.69	69°54'18"	80.86	132.56	S41°00'48"E



Expires: 3/31/ 17

JOB #	WA307279	DATE	09/15/16
T.1N., R.2E., SEC. 23, NE. 1/4			
SCALE 1" = 100' PAGE 10 OF 10			
PUBLIC UTILITY EASEMENT			
SURVEY: R. TAFT			
DRAWN BY: JRK			