



## City of Phoenix

Street Transportation Department

### Segment #1: Cave Creek Rd: SR101 to Deer Valley Rd (FY2018)

#### Construction Segments:

- Cave Creek Rd: N/O SR101-N/O Deer Valley Rd

#### Proposed Work Description:

The street is a major arterial that currently exhibits pavement deterioration. The project will apply a Micro Seal resurfacing treatment to the entire width of the roadway section. Specific improvements include the following: ADA improvements where required, crack sealing, Micro Seal resurfacing, and restoration of existing striping.

#### Estimated Schedule:

Spring 2018

Construction Work Phase: 2 Weeks

Total Project Costs: \$ 253,762

Design: \$ 0      ROW: \$ 0      Construction: \$ 228,386      Administration/ Inspection: \$ 25,376

#### Current Conditions:

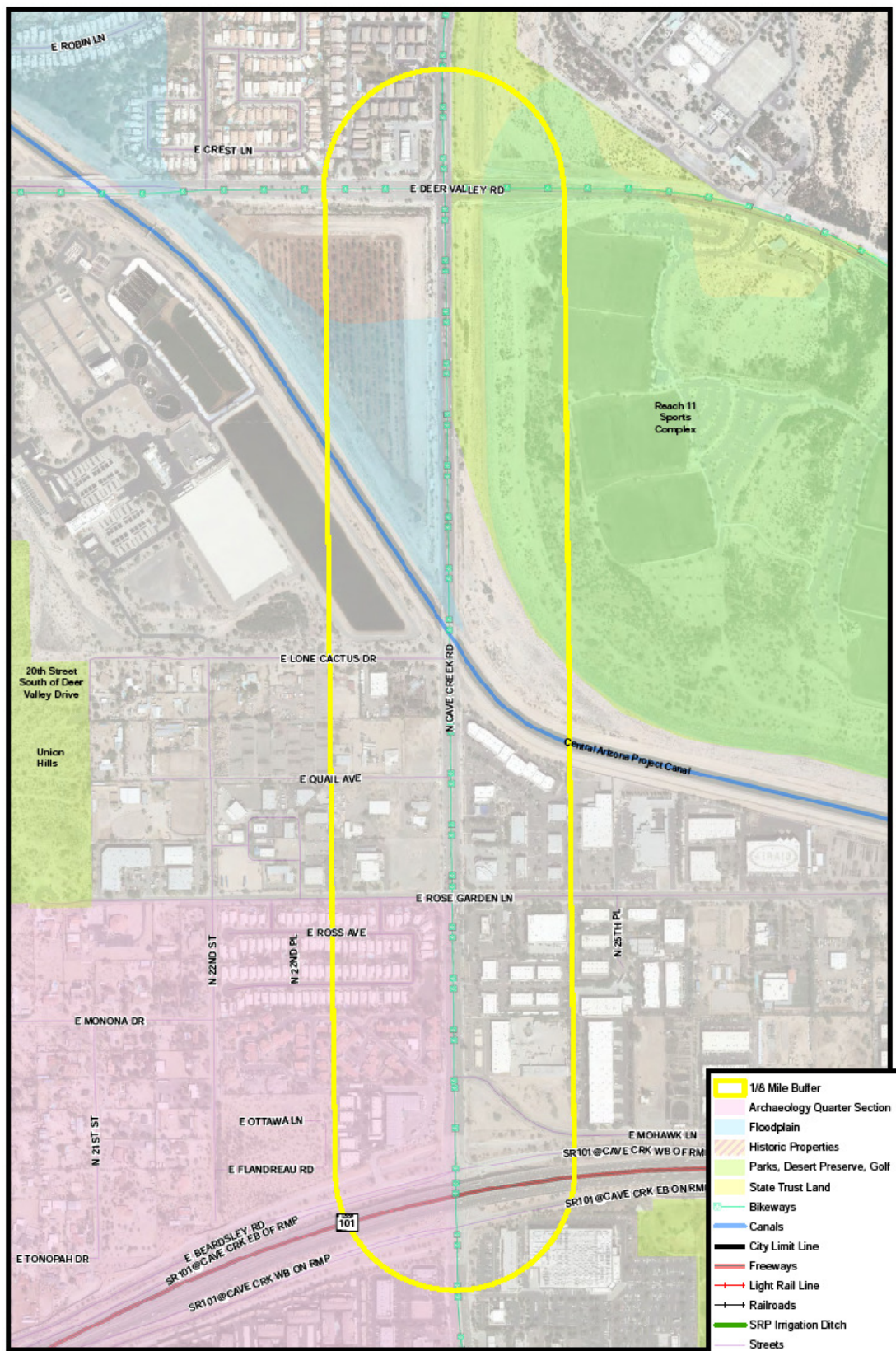
<b>Length:</b> 1.02 Miles	<b>Sidewalk:</b> 1.5 Miles	<b>Bike Facility:</b> 2 miles non-buffered	<b>Curb &amp; Gutter Length:</b> 1.5 Miles
<b>Vehicle Lanes:</b> Varies (3-0-3; 2-0-2 w/ medians)	<b>Landscaping:</b> Existing	<b># of Traffic Signals:</b> 8	
<b># of ADA Ramps:</b> 32	<b># of Transit Stops:</b> 0		

#### Post Conditions:

<b>Length:</b> 1.02 Miles	<b>Sidewalk:</b> 1.15 Miles	<b>Bike Facility:</b> 2 miles non-buffered	<b>Curb &amp; Gutter Length:</b> 1.5 Miles
<b>Vehicle Lanes:</b> Varies (3-0-3 w/ medians)	<b>Landscaping:</b> Existing	<b># of Traffic Signals:</b> 8	<b># of Traffic Signal Upgrades:</b> 0
<b># of Upgraded ADA Ramps:</b> TBD	<b># of New ADA Ramps:</b> 0	<b># of Transit Stops:</b> 0	



Cave Creek Rd North of Loop 101 Facing North





## City of Phoenix

Street Transportation Department

### Segment #2: Cave Creek Rd: Deer Valley Rd to Pinnacle Peak Rd (FY2019)

#### Construction Segments:

- Cave Creek Rd: N/O Deer Valley Rd to S/O Pinnacle Peak Rd

#### Proposed Work Description:

The street is a major arterial that currently exhibits advanced pavement deterioration. The project will consist of a Mill and Overlay resurfacing treatment to the entire width of the roadway section. Specific improvements include the following: ADA improvements where required, crack sealing, Mill and Overlay resurfacing, and restoration of existing striping.

#### Estimated Schedule:

Spring 2018

Construction Work Phase: 2 Weeks

Total Project Costs: \$ 707,014

Design: \$ 0      ROW: \$ 0      Construction: \$ 636,313      Administration/ Inspection: \$ 70,701

#### Current Conditions:

<b>Length:</b> 0.89 Mile	<b>Sidewalk:</b> 0.89 Miles	<b>Bike Facility:</b> 1.78 miles non-buffered	<b>Curb &amp; Gutter Length:</b> 0.89 Miles
<b>Vehicle Lanes:</b> Varies (2-0-2 w/ medians)	<b>Landscaping:</b> Existing	<b># of Traffic Signals:</b> 0	
<b># of ADA Ramps:</b> 6	<b># of Transit Stops:</b> 0		

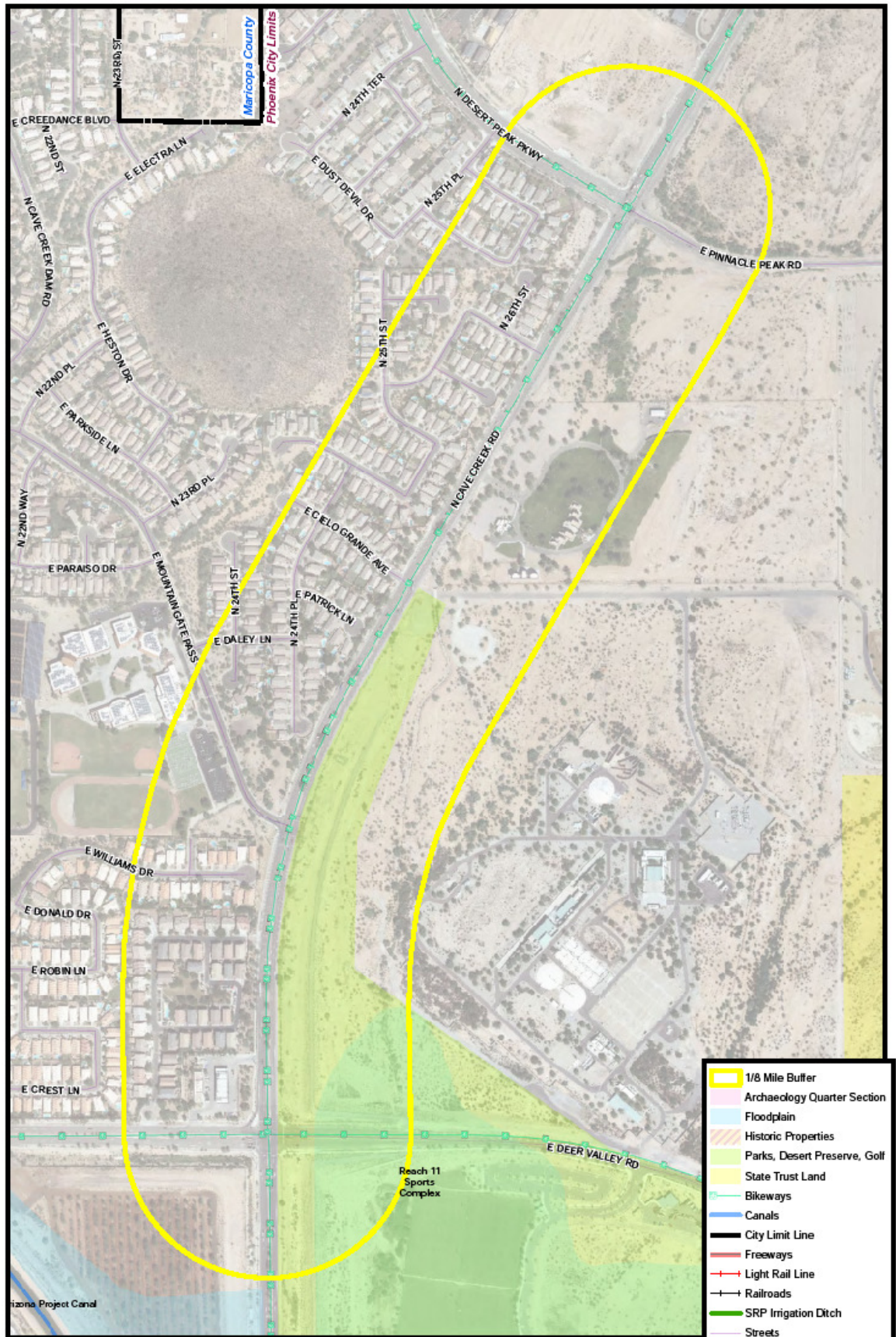
#### Post Conditions:

<b>Length:</b> 0.89 Miles	<b>Sidewalk:</b> 0.89 Miles	<b>Bike Facility:</b> 1.78 miles non-buffered	<b>Curb &amp; Gutter Length:</b> 0.89 Miles
<b>Vehicle Lanes:</b> Varies (2-0-2 w/ medians)	<b>Landscaping:</b> Existing	<b># of Traffic Signals:</b> 0	<b># of Traffic Signal Upgrades:</b> 0
<b># of Upgraded ADA Ramps:</b> TBD	<b># of New ADA Ramps:</b> 0	<b># of Transit Stops:</b> 0	



Cave Creek Rd North of Deer Valley Facing North





H:\Ryan\_Cave\_Creek\_Rd\_Maps\MXD\Cave\_Creek\_Rd\_Segment\_2.mxd 3/23/2017



## City of Phoenix

Street Transportation Department

### Segment #3: Cave Creek Rd: Pinnacle Peak Rd to Jomax Rd (FY2018)

#### Construction Segments:

- Cave Creek Rd: S/O Pinnacle Peak Rd to S/O Jomax Rd

#### Proposed Work Description:

The street is a major arterial that currently exhibits pavement deterioration. The project will apply a Tire Rubber Modified Surface Sealant surface treatment to the entire width of the roadway section.

#### Estimated Schedule:

Spring 2018

Construction Work Phase: 2 Weeks

#### Total Project Costs: \$ 82,048

Design: \$ 0      ROW: \$ 0      Construction: \$ 73,843      Administration/ Inspection: \$ 8,205

#### Current Conditions:

**Length:** 2.12 Mile

**Sidewalk:** 1.07 Miles

**Bike Facility:** 2.24  
miles non-buffered

**Curb & Gutter Length:**  
1.07 Miles

**Vehicle Lanes:**  
Varies (2-0-2 w/  
medians)

**Landscaping:** Existing

**# of Traffic Signals:** 4

**# of ADA Ramps:** --

**# of Transit Stops:** 0

#### Post Conditions:

**Length:** 2.12 Miles

**Sidewalk:** 1.07 Miles

**Bike Facility:** 2.24  
miles non-buffered

**Curb & Gutter Length:**  
1.07 Miles

**Vehicle Lanes:** Varies  
(2-0-2 w/ medians)

**Landscaping:** Existing

**# of Traffic Signals:** 4

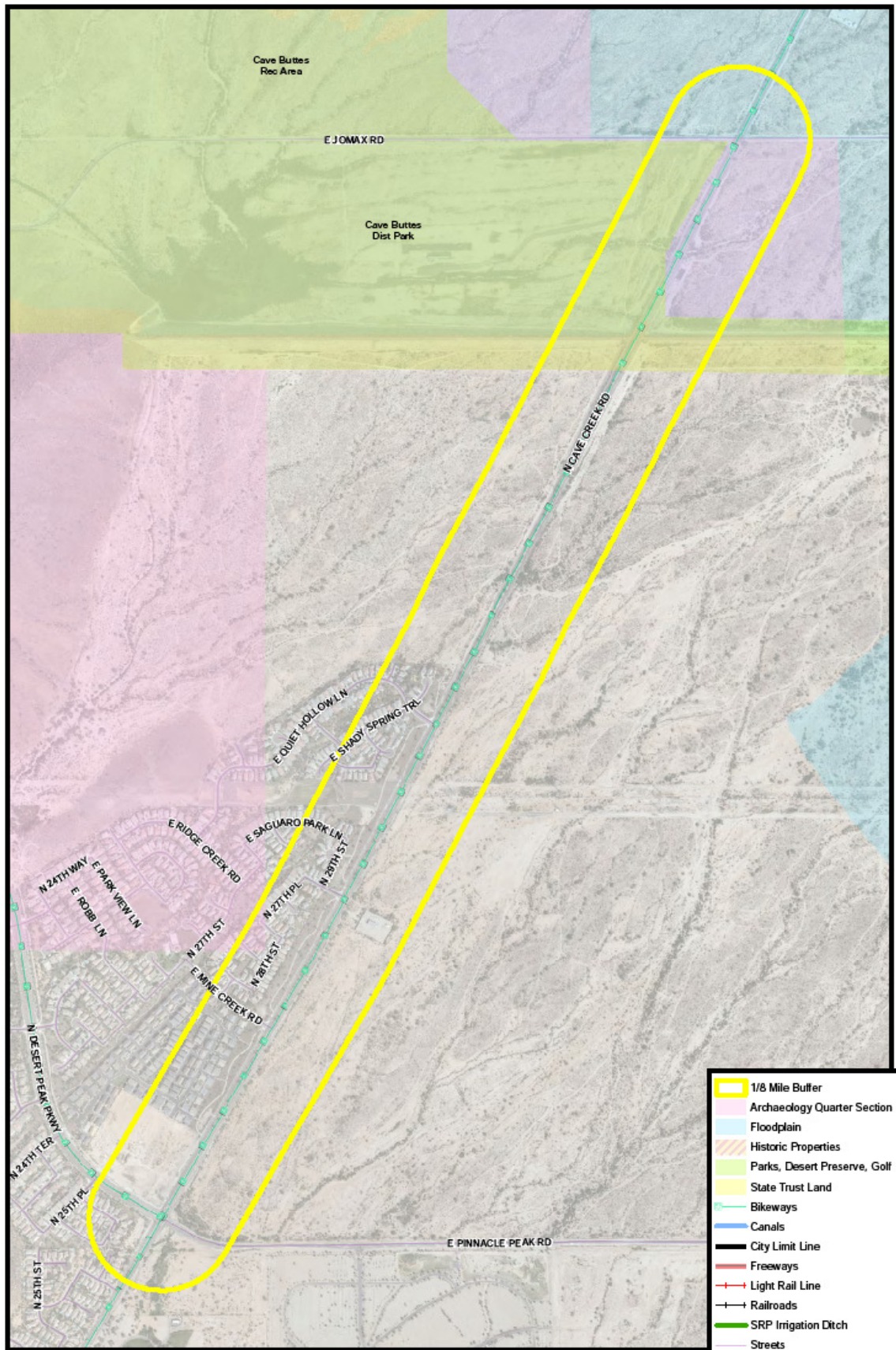
**# of Upgraded ADA  
Ramps:** TBD

**# of New ADA Ramps:** 0      **# of Transit Stops:** 0



Cave Creek Rd North of Pinnacle Peak Facing North





- 1/8 Mile Buffer
- Archaeology Quarter Section
- Floodplain
- Historic Properties
- Parks, Desert Preserve, Golf
- State Trust Land
- Bikeways
- Canals
- City Limit Line
- Freeways
- + + Light Rail Line
- + + Railroads
- SRP Irrigation Ditch
- Streets

H:\Rym\_Cave\_Creek\_Rd\_Maps\MXD\Cave\_Creek\_Rd\_Segment\_3.mxd 3/23/2017



## City of Phoenix

Street Transportation Department

### Segment #4: Cave Creek Rd: Jomax Rd to Dynamite Rd (FY2016)

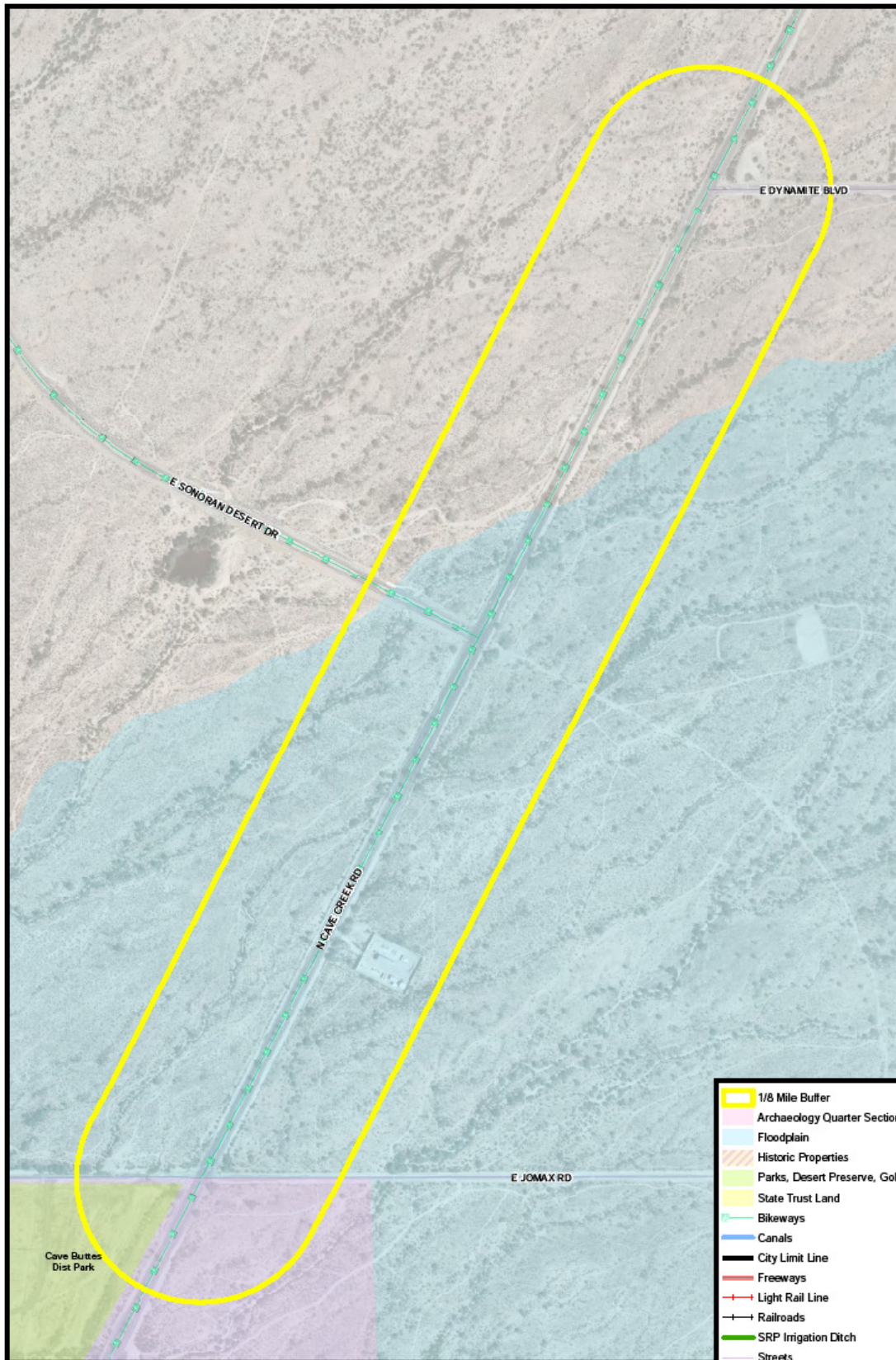


Cave Creek Rd North of Jomax Road Facing North

#### Proposed Work Description:

This segment of roadway received an arterial asphalt overlay in 2016. No additional work is planned for this segment of roadway.





- 1/8 Mile Buffer
- Archaeology Quarter Section
- Floodplain
- Historic Properties
- Parks, Desert Preserve, Golf
- State Trust Land
- Bikeways
- Canals
- City Limit Line
- Freeways
- +—+—+—+— Light Rail Line
- +—+—+—+— Railroads
- SRP Irrigation Ditch
- Streets

H:\Ryan\_Cave\_Creek\_Rd\_Maps\MOO\Cave\_Creek\_Rd\_Segment\_4.mxd 3/23/2017





## City of Phoenix

Street Transportation Department

### Segment #5: Cave Creek Rd: Dynamite Blvd to Tatum Blvd (FY2018)

#### Construction Segments:

- Cave Creek Rd: N/O Dynamite Blvd to S/O Tatum Blvd

#### Proposed Work Description:

The street is a major arterial that currently exhibits advanced pavement deterioration. The project will consist of a Mill and Overlay resurfacing treatment to the entire width of the roadway section. Specific improvements include the following: ADA improvements where required, crack sealing, Mill and Overlay resurfacing, and restoration of existing striping.

#### Estimated Schedule:

Spring 2018

Construction Work Phase: 2 Weeks

Total Project Costs: \$ 995,190

Design: \$ 0      ROW: \$ 0      Construction: \$ 895,671      Administration/ Inspection: \$ 99,519

#### Current Conditions:

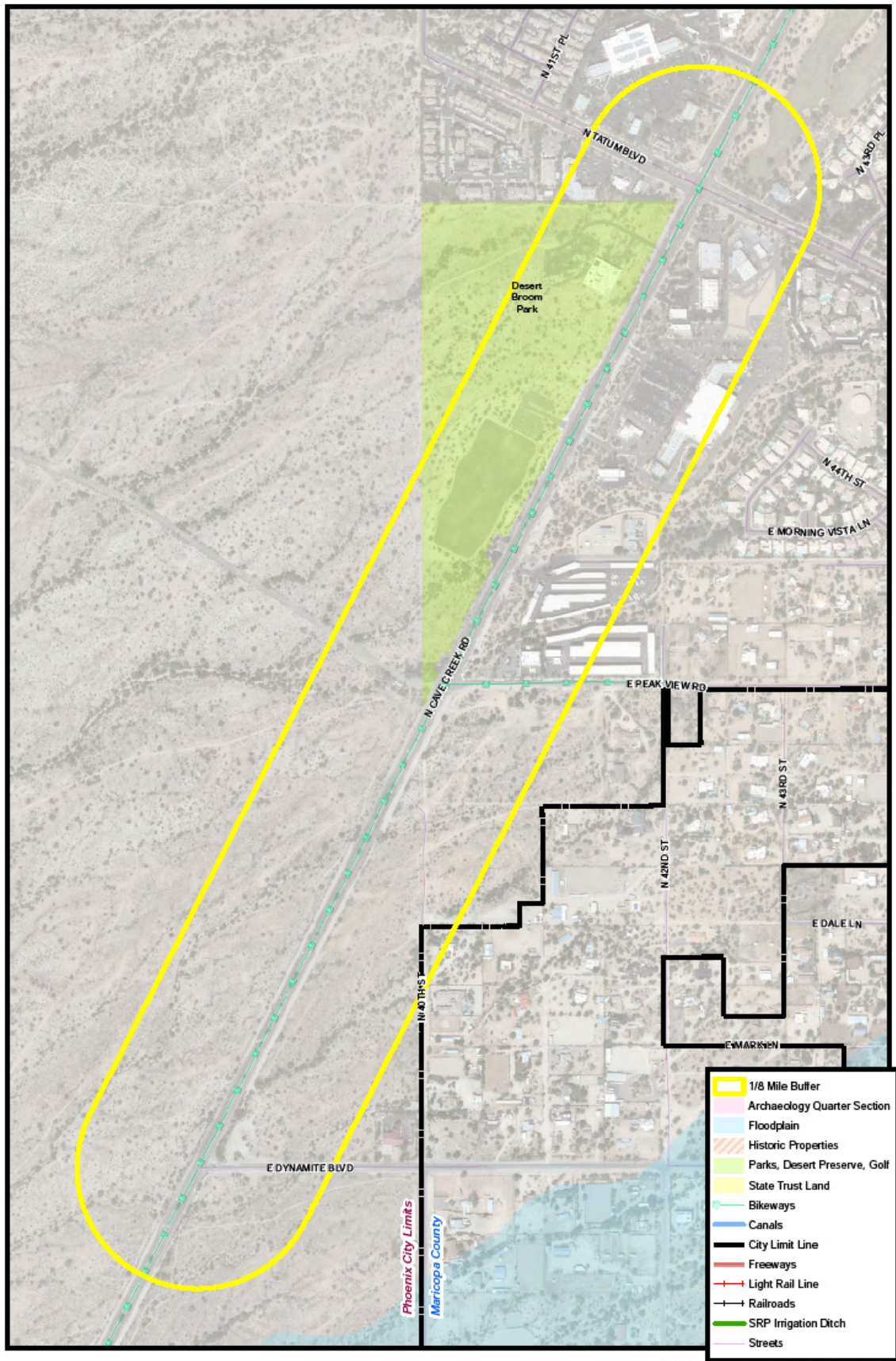
<b>Length:</b> 1.37 Miles	<b>Sidewalk:</b> 0.67 Miles	<b>Bike Facility:</b> 2.74 miles non-buffered	<b>Curb &amp; Gutter Length:</b> 0.67 Miles
<b>Vehicle Lanes:</b> Varies (2-0-2 w/ medians)	<b>Landscaping:</b> Existing	<b># of Traffic Signals:</b> 0	
<b># of ADA Ramps:</b> 2	<b># of Transit Stops:</b> 0		

#### Post Conditions:

<b>Length:</b> 1.37 Miles	<b>Sidewalk:</b> 0.67 Miles	<b>Bike Facility:</b> 2.74 miles non-buffered	<b>Curb &amp; Gutter Length:</b> 0.67 Miles
<b>Vehicle Lanes:</b> Varies (2-0-2 w/ medians)	<b>Landscaping:</b> Existing	<b># of Traffic Signals:</b> 0	<b># of Traffic Signal Upgrades:</b> 0
<b># of Upgraded ADA Ramps:</b> 0	<b># of New ADA Ramps:</b> 0	<b># of Transit Stops:</b> 0	



Cave Creek Rd North of Dynamite Facing North



H:\Ryan\_Cave\_Creek\_Rd\_Map\W007\Cave\_Creek\_Rd\_Segment\_5.mxd 3/23/2017