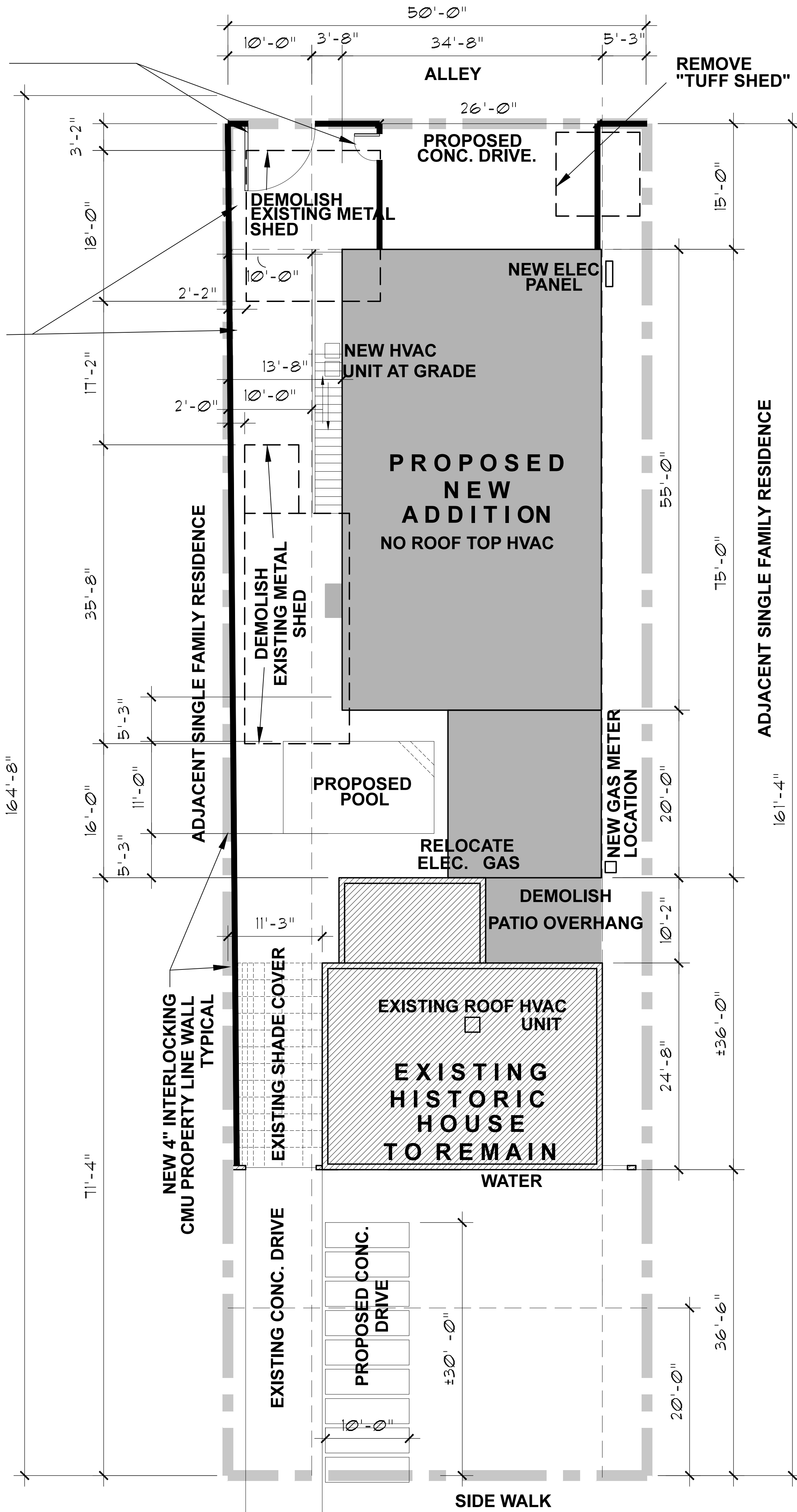


NEW RV & MAN GATE
CONSTRUCTION TO BE PAINTED
TUBE STEEL WITH VERTICAL WOOD
SLATS PAINT, OR SEALED NATURAL
FINISH

PROPOSED NEW WEST & SOUTH
SITE WALL IS NEW CONCRETE
MASONRY UNIT BLOCK WALL WITH
PAINTED FINISH. 6'-0" H. TYPICAL



GENERAL NOTES

DEMOLITION PLAN IS DIAGRAMMATIC AND MAY NOT SHOW COMPLETE DEMOLITION REQUIRED FOR ALL NEW INSTALLATIONS

FIELD VERIFY ALL EXISTING CONDITIONS AND NOTIFY CONTRACTOR OR ANY CONFLICTS

VERIFY SALVAGE ITEMS WITH CONTRACTOR/OWNER

SUBS AND CONTRACTOR SHALL LEGALLY DISPOSE OF ALL DEBRIS AND MATERIALS FROM DEMOLITION OPERATIONS

DEMOLITION SCOPE INCLUDES COMPLETE REMOVAL OF DESIGNATED ITEMS AND OR FINISHES. COMPLETION OF DEMOLITION INCLUDES CLEANING AND SWEEPING TO BROOM FINISH.

existing house = 1018
proposed new sf = 2207
total roof area = 3225
lot size = 8235
39.14% lot coverage
45% allowable
zoning district r-3 hp

S. W. - 1 PRELIM SITE PLAN
N. SCALE: 1/8" = 1'-0"

Plans Submitted ~~9/18/18~~
Per Hearing Officer's
Stipulation

granada

937 east granada
phoenix az 85018

apn : 117- 32- 064

issued for	rev	date
HISTORIC SUBMITTLE		9-19-17
HISTORIC HEARING		10-11-17

SOU LLC HEREBY EXPRESSLY RESERVES COPYRIGHT AND OTHER PROPERTY RIGHTS IN THESE CONSTRUCTION DOCUMENTS AND DRAWINGS. THESE CONSTRUCTION DOCUMENTS AND DRAWINGS ARE AN INSTRUMENT OF SERVICE FOR SOU LLC AND SHALL NOT BE CHANGED, COPIED, OR REPRODUCED IN ANY FORM OR MANNER, NOR ARE THEY TO BE ASSIGNED TO ANY THIRD PARTY WITHOUT FIRST OBTAINING THE EXPRESS WRITTEN PERMISSION AND CONSENT OF SOU LLC.

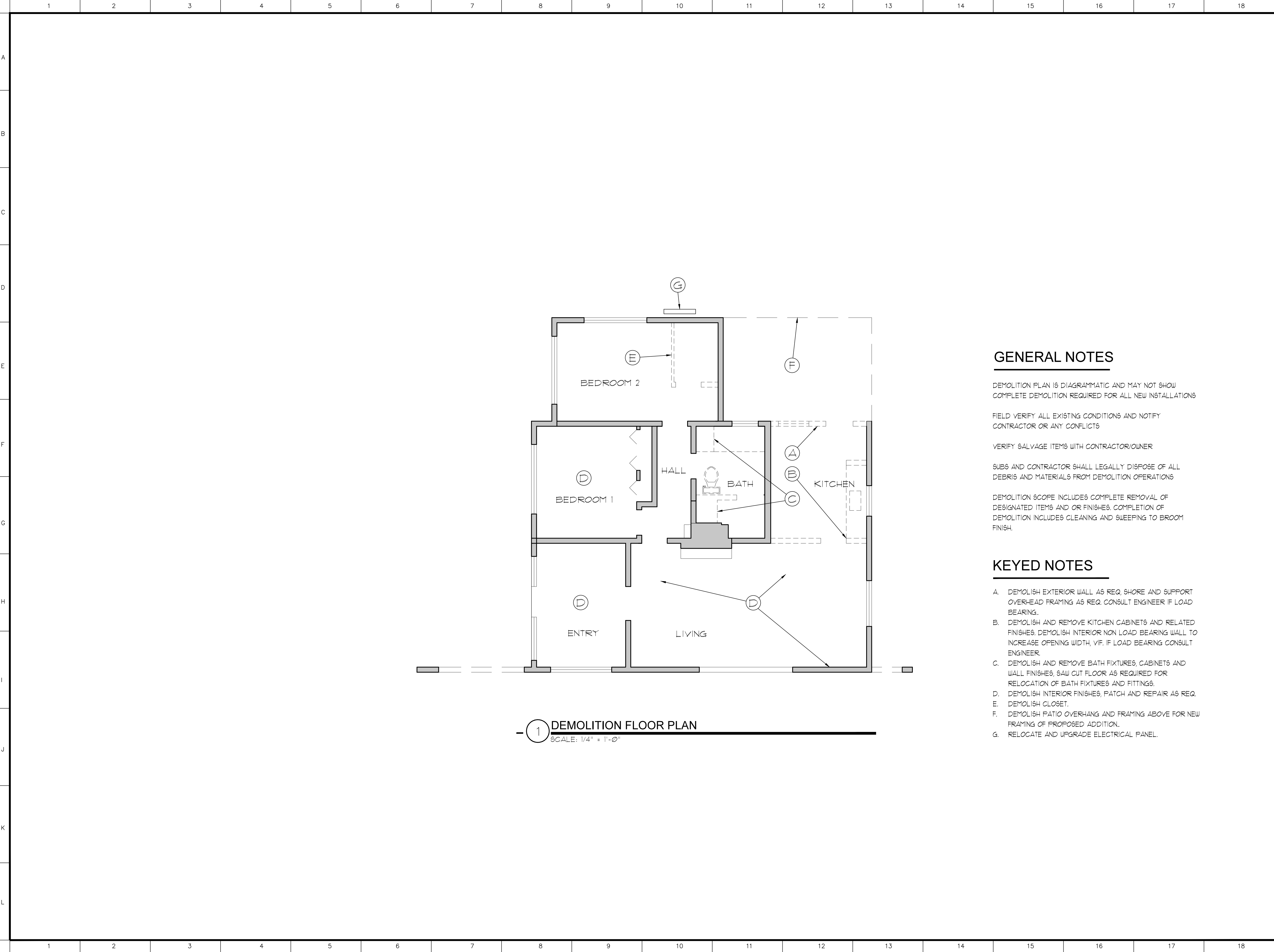
CONTRACTORS SHALL VERIFY AND BE RESPONSIBLE FOR ALL DIMENSIONS AND CONDITIONS ON THE JOB AND SHALL NOTIFY SOU LLC OF ANY VARIATIONS FROM THE CONDITIONS SHOWN BY THESE CONSTRUCTION DOCUMENTS AND DRAWINGS. ALL DRAWINGS ARE DIAGRAMMATIC.

COPYRIGHT 2017

DRAWN BY:



BROCKONEILL
602.578.8706



GENERAL NOTES

DEMOLITION PLAN IS DIAGRAMMATIC AND MAY NOT SHOW COMPLETE DEMOLITION REQUIRED FOR ALL NEW INSTALLATIONS

FIELD VERIFY ALL EXISTING CONDITIONS AND NOTIFY CONTRACTOR OR ANY CONFLICTS

VERIFY SALVAGE ITEMS WITH CONTRACTOR/OWNER

SUBS AND CONTRACTOR SHALL LEGALLY DISPOSE OF ALL DEBRIS AND MATERIALS FROM DEMOLITION OPERATIONS

DEMOLITION SCOPE INCLUDES COMPLETE REMOVAL OF DESIGNATED ITEMS AND OR FINISHES. COMPLETION OF DEMOLITION INCLUDES CLEANING AND SWEEPING TO BROOM FINISH.

KEYED NOTES

- A. DEMOLISH EXTERIOR WALL AS REQ. SHORE AND SUPPORT OVERHEAD FRAMING AS REQ. CONSULT ENGINEER IF LOAD BEARING.
- B. DEMOLISH AND REMOVE KITCHEN CABINETS AND RELATED FINISHES. DEMOLISH INTERIOR NON LOAD BEARING WALL TO INCREASE OPENING WIDTH, VIF. IF LOAD BEARING CONSULT ENGINEER.
- C. DEMOLISH AND REMOVE BATH FIXTURES, CABINETS AND WALL FINISHES, SAW CUT FLOOR AS REQUIRED FOR RELOCATION OF BATH FIXTURES AND FITTINGS.
- D. DEMOLISH INTERIOR FINISHES, PATCH AND REPAIR AS REQ.
- E. DEMOLISH CLOSET.
- F. DEMOLISH PATIO OVERHANG AND FRAMING ABOVE FOR NEW FRAMING OF PROPOSED ADDITION.
- G. RELOCATE AND UPGRADE ELECTRICAL PANEL.

granada

937 east granada
phoenix az 85018

apn : 117- 32- 064

issued for	rev	date
HISTORIC APPROVAL	-	-
BUILDING PERMIT	-	-
	-	-
	-	-
	-	-
	-	-
	-	-

demolition plan

SOU LLC HEREBY EXPRESSLY RESERVES COMMON LAW COPYRIGHT AND OTHER PROPERTY RIGHTS IN THESE CONSTRUCTION DOCUMENTS AND DRAWINGS. THESE CONSTRUCTION DOCUMENTS AND DRAWINGS ARE AN INSTRUMENT OF SERVICE FOR SOU LLC AND SHALL NOT BE CHANGED, COPIED, OR REPRODUCED IN ANY FORM OR MANNER NOR ARE THEY TO BE ASSIGNED TO ANY THIRD PARTY WITHOUT FIRST OBTAINING THE EXPRESS WRITTEN PERMISSION AND CONSENT OF SOU LLC.

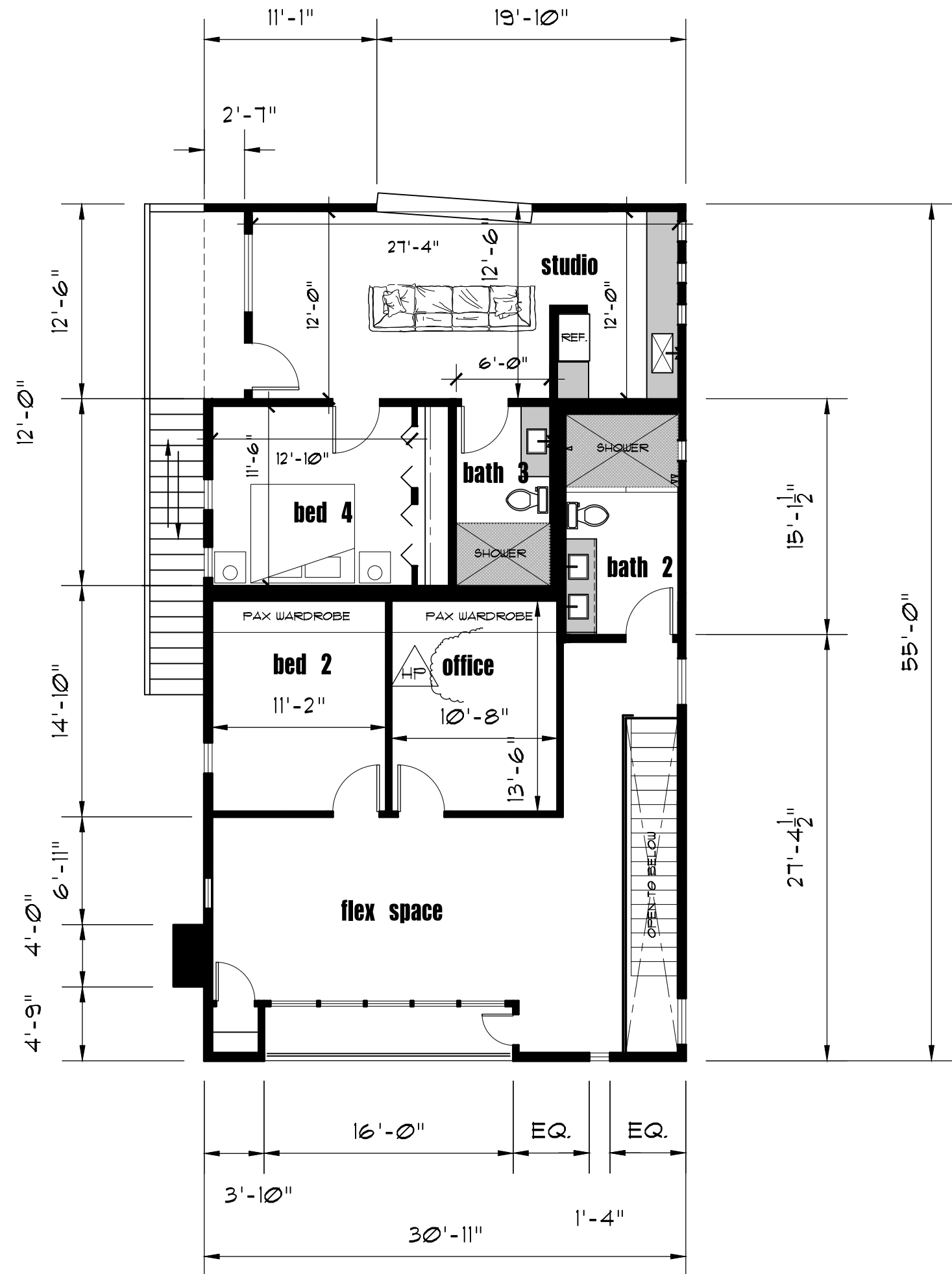
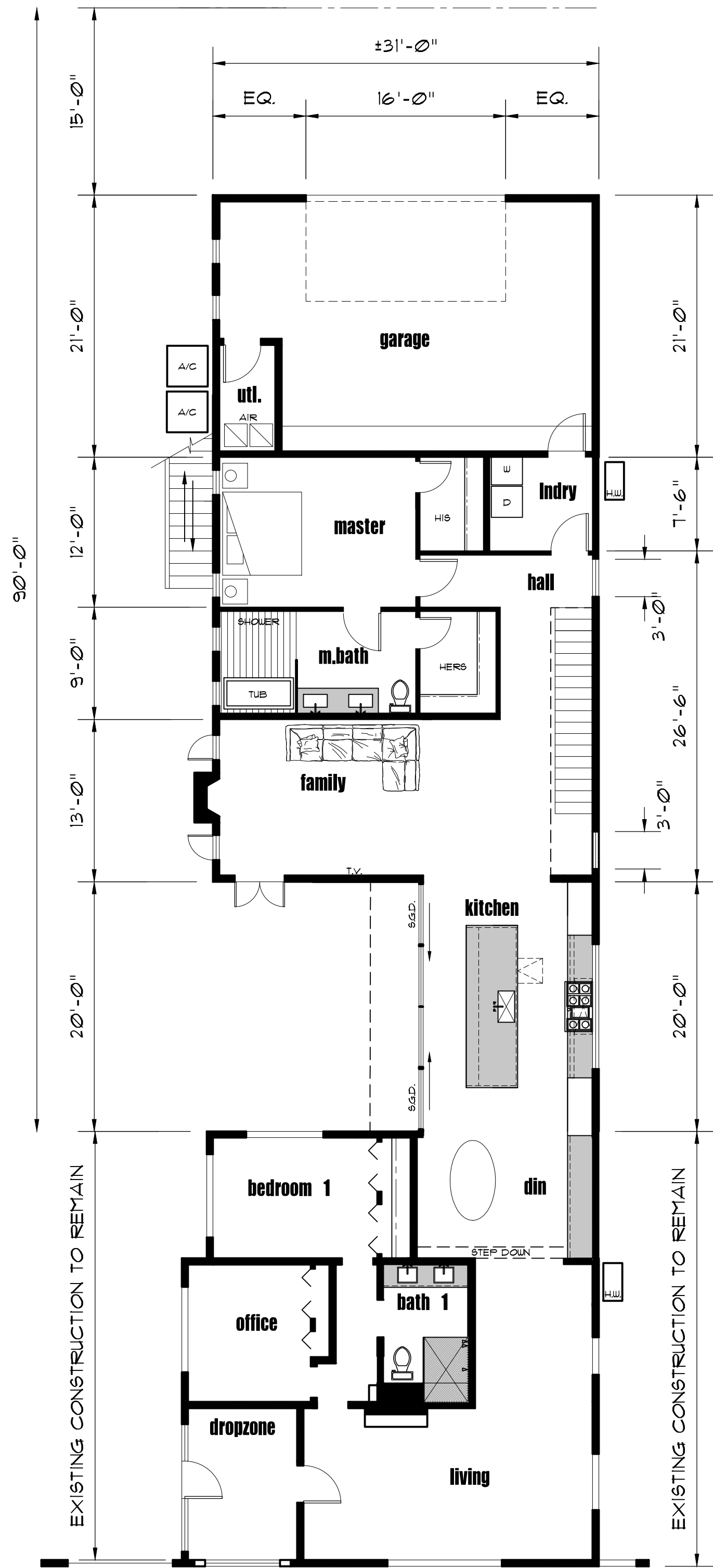
CONTRACTORS SHALL VERIFY AND BE RESPONSIBLE FOR ALL DIMENSIONS AND CONDITIONS ON THE JOB AND SHALL NOTIFY SOU LLC OF ANY VARIATIONS FROM THE CONDITIONS SHOWN BY THESE CONSTRUCTION DOCUMENTS AND DRAWINGS. ALL DRAWINGS ARE DIAGRAMMATIC.

COPYRIGHT 2011

DRAWN BY:

BROCKONEILL

602.578.8706



1 PROPOSED NEW FLOOR PLAN
SCALE: 1/8" = 1'-0"

granada

937 east granada
phoenix az 85018
apn : 117- 32- 064

issued for	rev	date
HISTORIC SUBMITTLE		9-19-17
HISTORIC HEARING		10-11-17

SOU LLC HEREBY EXPRESSLY RESERVES COMMON LAW COPYRIGHT AND OTHER PROPERTY RIGHTS IN THESE CONSTRUCTION DOCUMENTS AND DRAWINGS. THESE CONSTRUCTION DOCUMENTS AND DRAWINGS ARE AN INSTRUMENT OF SERVICE FOR SOU LLC AND SHALL NOT BE CHANGED, COPIED, OR REPRODUCED IN ANY FORM OR MANNER NOR ARE THEY TO BE ASSIGNED TO ANY THIRD PARTY WITHOUT FIRST OBTAINING THE EXPRESS WRITTEN PERMISSION AND CONSENT OF SOU LLC.

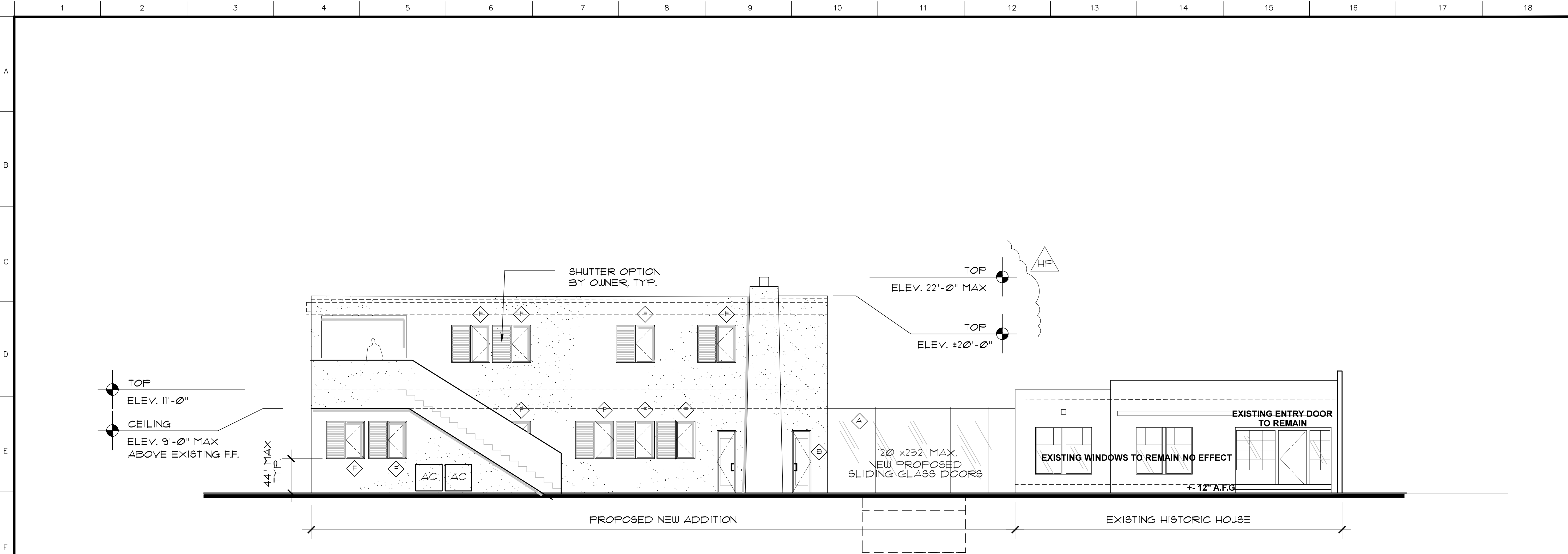
CONTRACTORS SHALL VERIFY AND BE RESPONSIBLE FOR ALL DIMENSIONS AND CONDITIONS ON THE JOB AND SHALL NOTIFY SOU LLC OF ANY VARIATIONS FROM THE CONDITIONS SHOWN BY THESE CONSTRUCTION DOCUMENTS AND DRAWINGS. ALL DRAWINGS ARE DIAGNOSTIC.

COPYRIGHT 2011

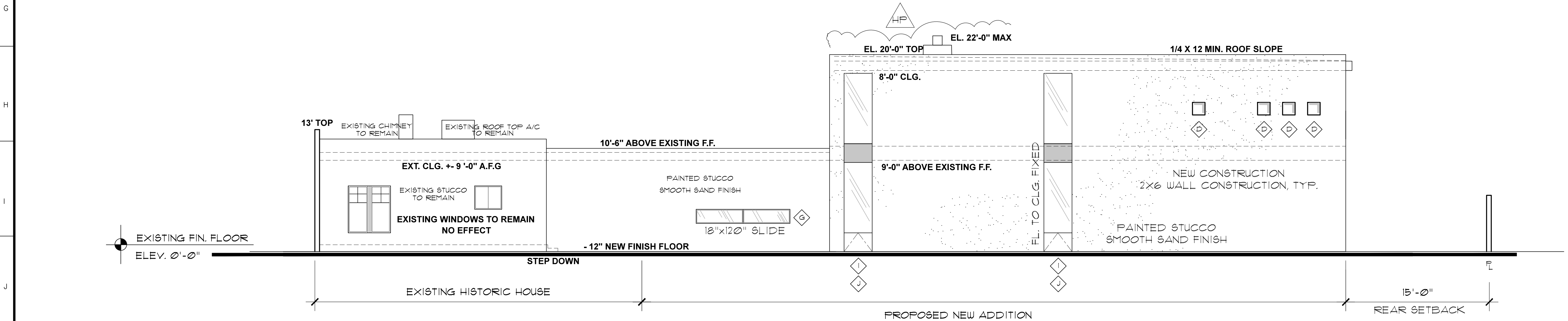
DRAWN BY:

BROCKONEILL

602.578.8706



2. LOOKING WEST
SCALE : 3/16" = 1'-0"



1. LOOKING EAST
SCALE : 3/16" = 1'-0"

granada

937 east granada
phoenix az 85018
apn : 117- 32- 064

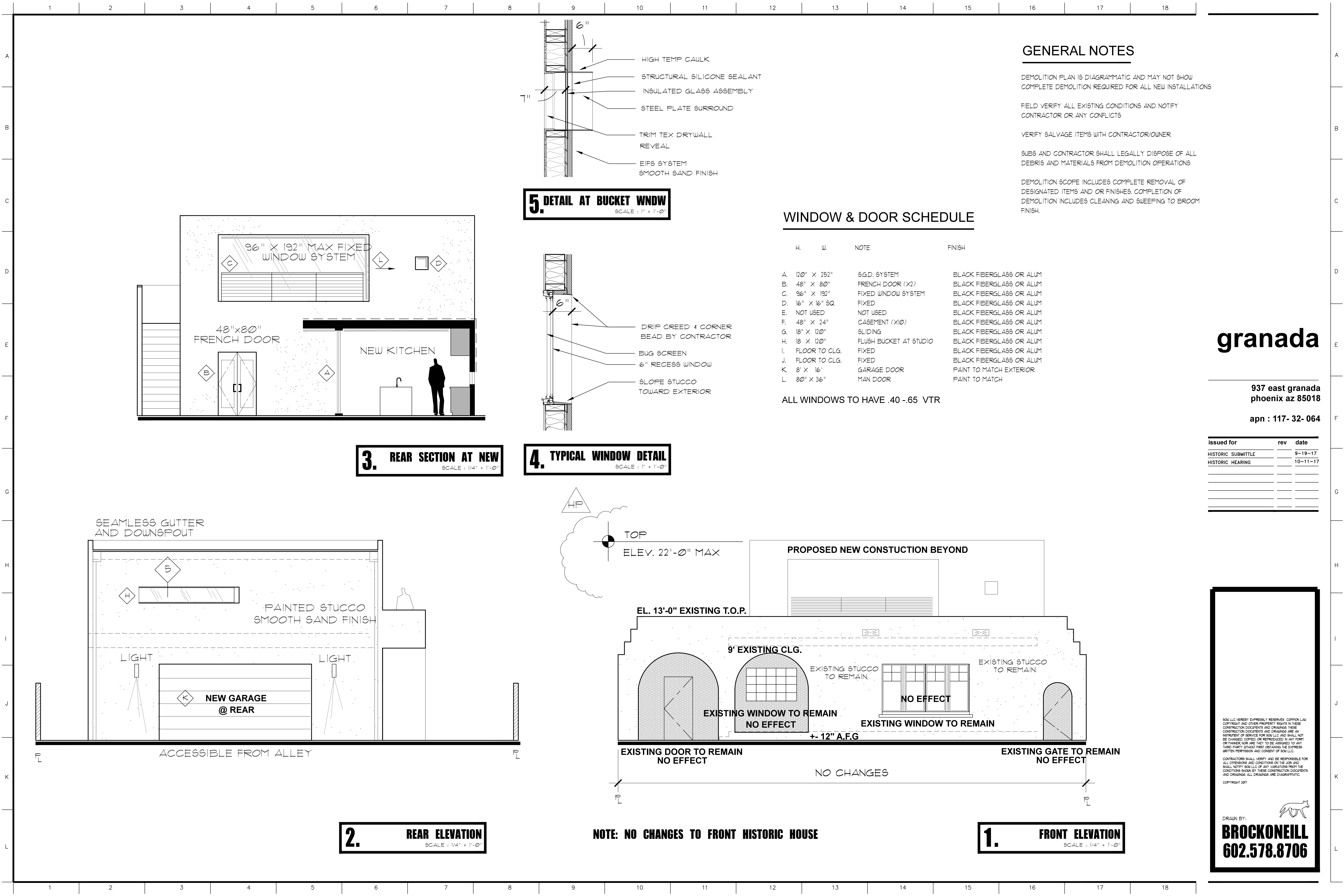
issued for	rev	date
HISTORIC SUBMITTLE		9-19-17
HISTORIC HEARING		10-11-17

SOU LLC HEREBY EXPRESSLY RESERVES COPYRIGHT AND OTHER PROPERTY RIGHTS IN THESE CONSTRUCTION DOCUMENTS AND DRAWINGS. THESE CONSTRUCTION DOCUMENTS AND DRAWINGS ARE AN INSTRUMENT OF SERVICE FOR SOU LLC AND SHALL NOT BE CHANGED, COPIED, OR REPRODUCED IN ANY FORM OR MANNER NOR ARE THEY TO BE ASSIGNED TO ANY THIRD PARTY WITHOUT FIRST OBTAINING THE EXPRESS WRITTEN PERMISSION AND CONSENT OF SOU LLC.

CONTRACTORS SHALL VERIFY AND BE RESPONSIBLE FOR ALL DIMENSIONS AND CONDITIONS ON THE JOB AND SHALL NOTIFY SOU LLC OF ANY VARIATIONS FROM THE CONDITIONS SHOWN BY THESE CONSTRUCTION DOCUMENTS AND DRAWINGS. ALL DRAWINGS ARE DIAGNOSTIC.

COPYRIGHT 2017

DRAWN BY:
BROCKONEILL
602.578.8706



GENERAL NOTES

DEMOLITION PLAN IS DIAGRAMMATIC AND MAY NOT SHOW COMPLETE DEMOLITION REQUIRED FOR ALL NEW INSTALLATIONS

FIELD VERIFY ALL EXISTING CONDITIONS AND NOTIFY CONTRACTOR OR ANY CONFLICTS

VERIFY SALVAGE ITEMS WITH CONTRACTOR/OWNER

SUBS AND CONTRACTOR SHALL LEGALLY DISPOSE OF ALL DEBRIS AND MATERIALS FROM DEMOLITION OPERATIONS

DEMOLITION SCOPE INCLUDES COMPLETE REMOVAL OF DESIGNATED ITEMS AND OR FINISHES. COMPLETION OF DEMOLITION INCLUDES CLEANING AND SWEEPING TO BROOM FINISH.

WINDOW & DOOR SCHEDULE

H.	W.	NOTE	FINISH
A.	120" X 252"	S.G.D. SYSTEM	BLACK FIBERGLASS OR ALUM
B.	48" X 80"	FRENCH DOOR (X2)	BLACK FIBERGLASS OR ALUM
C.	96" X 192"	FIXED WINDOW SYSTEM	BLACK FIBERGLASS OR ALUM
D.	16" X 16" SQ.	FIXED	BLACK FIBERGLASS OR ALUM
E.	NOT USED	NOT USED	BLACK FIBERGLASS OR ALUM
F.	48" X 24"	CASEMENT (X10)	BLACK FIBERGLASS OR ALUM
G.	18" X 120"	SLIDING	BLACK FIBERGLASS OR ALUM
H.	18" X 120"	FLUSH BUCKET AT STUDIO	BLACK FIBERGLASS OR ALUM
I.	FLOOR TO CLG.	FIXED	BLACK FIBERGLASS OR ALUM
J.	FLOOR TO CLG.	FIXED	BLACK FIBERGLASS OR ALUM
K.	8' X 16'	GARAGE DOOR	PAINT TO MATCH EXTERIOR
L.	80" X 36"	MAN DOOR	PAINT TO MATCH

ALL WINDOWS TO HAVE .40 -.65 VTR

granada

937 east granada
phoenix az 85018

apn : 117- 32- 064

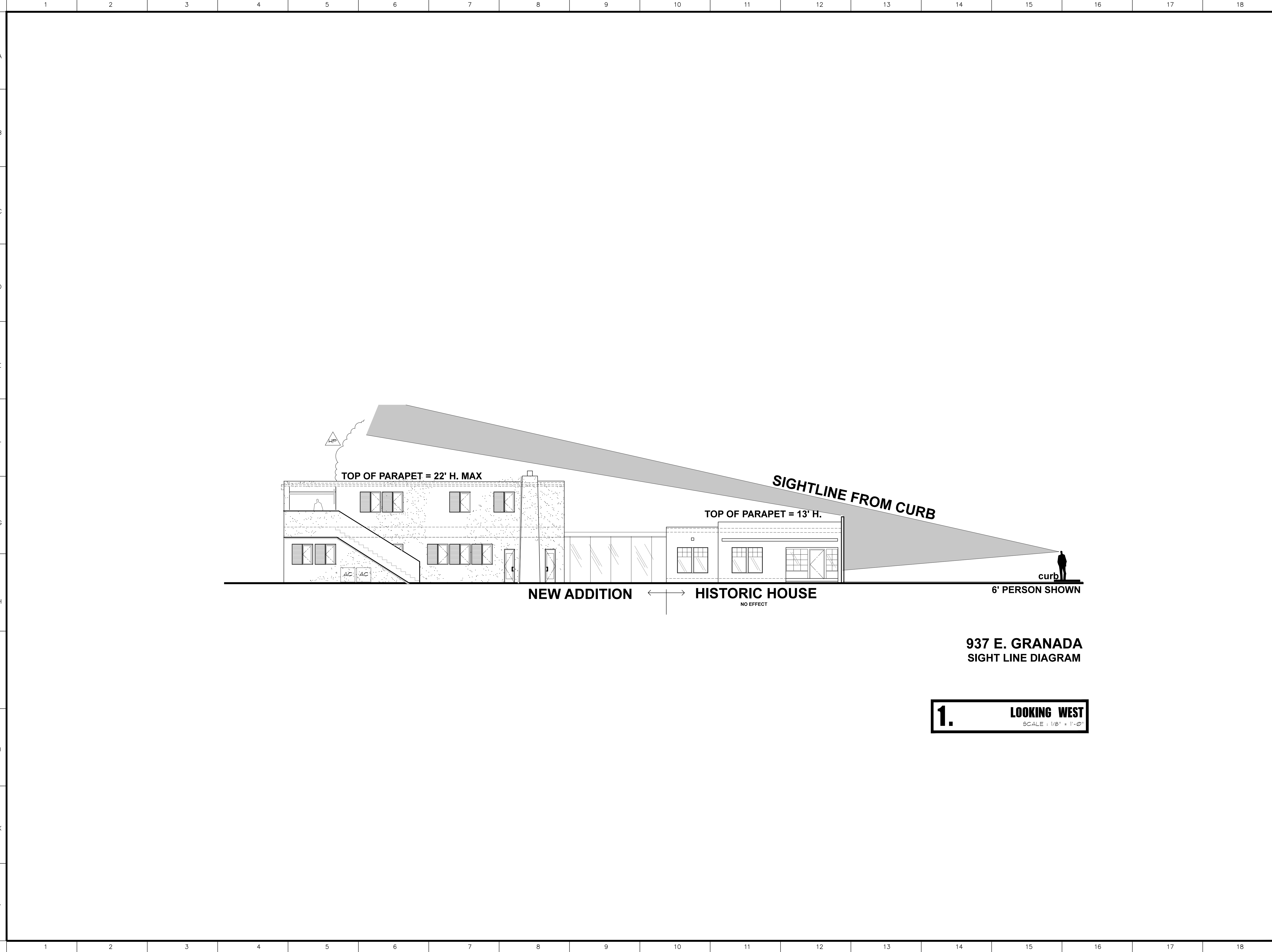
issued for	rev	date
HISTORIC SUBMITTLE		9-19-17
HISTORIC HEARING		10-11-17

SOU LLC HEREBY EXPRESSLY RESERVES ALL COPYRIGHT AND OTHER PROPERTY RIGHTS IN THESE CONSTRUCTION DOCUMENTS AND DRAWINGS. THESE CONSTRUCTION DOCUMENTS AND DRAWINGS ARE AN INSTRUMENT OF SERVICE FOR SOU LLC AND SHALL NOT BE CHANGED, COPIED, OR REPRODUCED IN ANY FORM OR MANNER NOR ARE THEY TO BE ASSIGNED TO ANY THIRD PARTY WITHOUT FIRST OBTAINING THE EXPRESS WRITTEN PERMISSION AND CONSENT OF SOU LLC.

CONTRACTORS SHALL VERIFY AND BE RESPONSIBLE FOR ALL DIMENSIONS AND CONDITIONS ON THE JOB AND SHALL NOTIFY SOU LLC OF ANY VARIATIONS FROM THE CONDITIONS SHOWN BY THESE CONSTRUCTION DOCUMENTS AND DRAWINGS. ALL DRAWINGS ARE DIAGRAMMATIC.

COPYRIGHT 2017

DRAWN BY:
BROCKONEILL
602.578.8706



granada

937 east granada
phoenix az 85018

apn : 117- 32- 064

issued for	rev	date
HISTORIC SUBMITTLE		9-19-17
HISTORIC HEARING		10-11-17

937 E. GRANADA
SIGHT LINE DIAGRAM

1.

LOOKING WEST
SCALE : 1/8" = 1'-0"

SOI LLC HEREBY EXPRESSLY RESERVES COMMON LAW COPYRIGHT AND OTHER PROPERTY RIGHTS IN THESE CONSTRUCTION DOCUMENTS AND DRAWINGS. THESE CONSTRUCTION DOCUMENTS AND DRAWINGS ARE AN INSTRUMENT OF SERVICE FOR SOI LLC AND SHALL NOT BE CHANGED, COPIED, OR REPRODUCED IN ANY FORM OR MANNER NOR ARE THEY TO BE ASSIGNED TO ANY THIRD PARTY WITHOUT FIRST OBTAINING THE EXPRESS WRITTEN PERMISSION AND CONSENT OF SOI LLC.

CONTRACTORS SHALL VERIFY AND BE RESPONSIBLE FOR ALL DIMENSIONS AND CONDITIONS ON THE JOB AND SHALL NOTIFY SOI LLC OF ANY VARIATIONS FROM THE CONDITIONS SHOWN BY THESE CONSTRUCTION DOCUMENTS AND DRAWINGS. ALL DRAWINGS ARE DIAGNOSTIC.

COPYRIGHT 2017

DRAWN BY:

**BROCKONEILL**
602.578.8706