

Attachment B

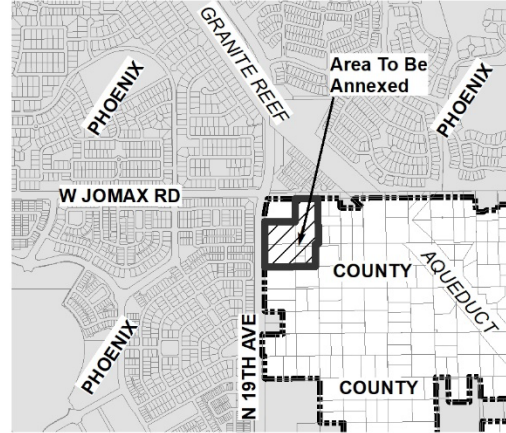
ANNEXATION MAP BRILES PASS



City of Phoenix

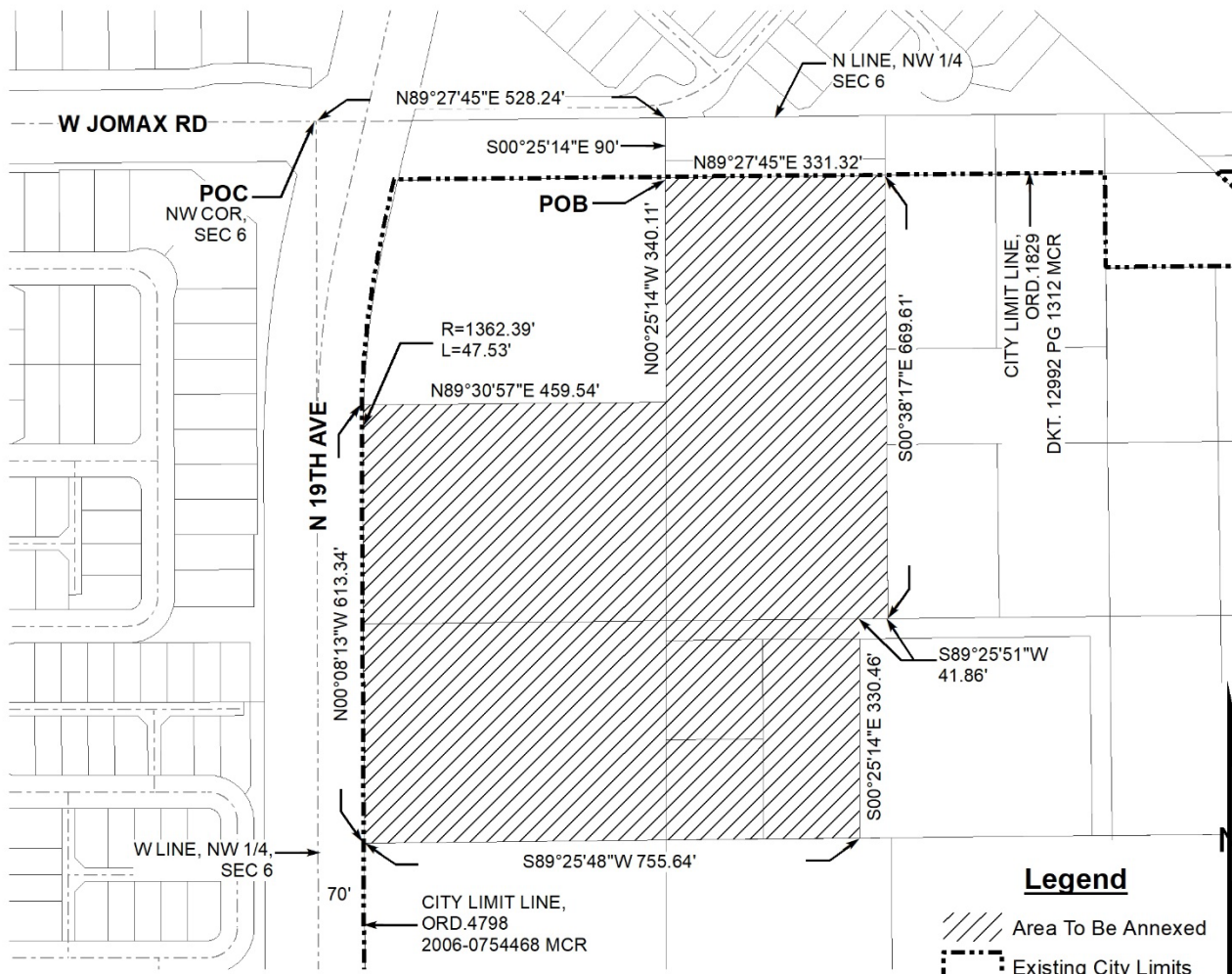
LEGAL DESCRIPTION
SECTION 6 T. 4 N., R. 3 E.,
G. & S. R. B. & M.

VICINITY MAP



ANNEXATION NUMBER: 554

AREA IN SQUARE MILES
0.02239



August 8, 2025

LEGAL DESCRIPTION FOR
BRILES PASS
ANNEXATION PARCEL

That part of the Northwest Quarter of Section 6, Township 4 North, Range 3 East, of the Gila and Salt River Meridian, Maricopa County, Arizona, more particularly described as follows:

Commencing at the Brass Cap flush marking the Northwest Corner of said Section 6, from which the Brass Cap flush marking the West Quarter Corner of said Section 6 bears South 00°08'13" East, a distance of 2082.04 feet;

Thence North 89°27'45" East, along the North line of said Northwest Quarter, a distance of 528.24 feet;

Thence South 00°25'14" East, departing said North line, a distance of 90.00 feet to a point on a line which is parallel with and 90.00 feet Southerly from said North line, being the Point of Beginning;

Thence North 89°27'45" East, along said parallel line, a distance of 331.32 feet;

Thence South 00°38'17" East, departing said parallel line, a distance of 669.61 feet;

Thence South 89°25'51" West, a distance of 41.86 feet;

Thence South 00°25'14" East, a distance of 330.46 feet;

Thence South 89°25'48" West, a distance of 755.64 feet to a point on a line which is parallel with and 70.00 feet Easterly from the West line of said Northwest Quarter;

Thence North 00°08'13" West, along said parallel line, a distance of 613.34 feet to the beginning of a tangent curve of 1362.39 foot radius, concave Easterly;

Thence Northerly, along said curve, through a central angle of 01°59'56", a distance of 47.53 feet;

Thence North 89°30'57" East, a distance of 459.54 feet;

Thence North 00°25'14" West, a distance of 340.11 feet to the Point of Beginning.

Containing 624,371 Square Feet or 14.334 Acres, more or less.



BRILES PASS
ANNEXATION PARCEL

N89°27'45.05" E 528.24

S00°25'14.37" E 90.00

BOUNDARY

N89°27'45.05" E 331.32

S00°38'16.52" E 669.61

S89°25'50.88" W 41.86

S00°25'14.37" E 330.46

S89°25'48.41" W 755.64

N00°08'13.05" W 613.34

RB = N89°51'46.95" E

R = 1362.39

A = 47.53

C = 47.53

CB = N00°51'44.92" E

D = 01°59'55.94"

T = 23.77

RB = N88°08'17.11" W

N89°30'56.78" E 459.54

N00°25'14.37" W 340.11

to

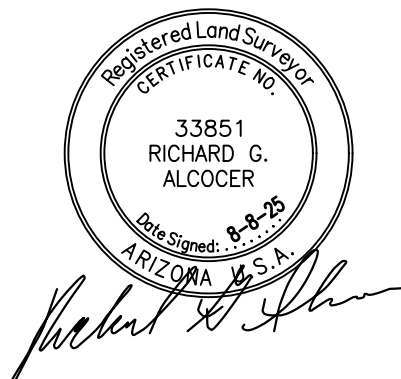
Area = 624371 14.334 AC

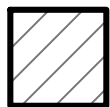
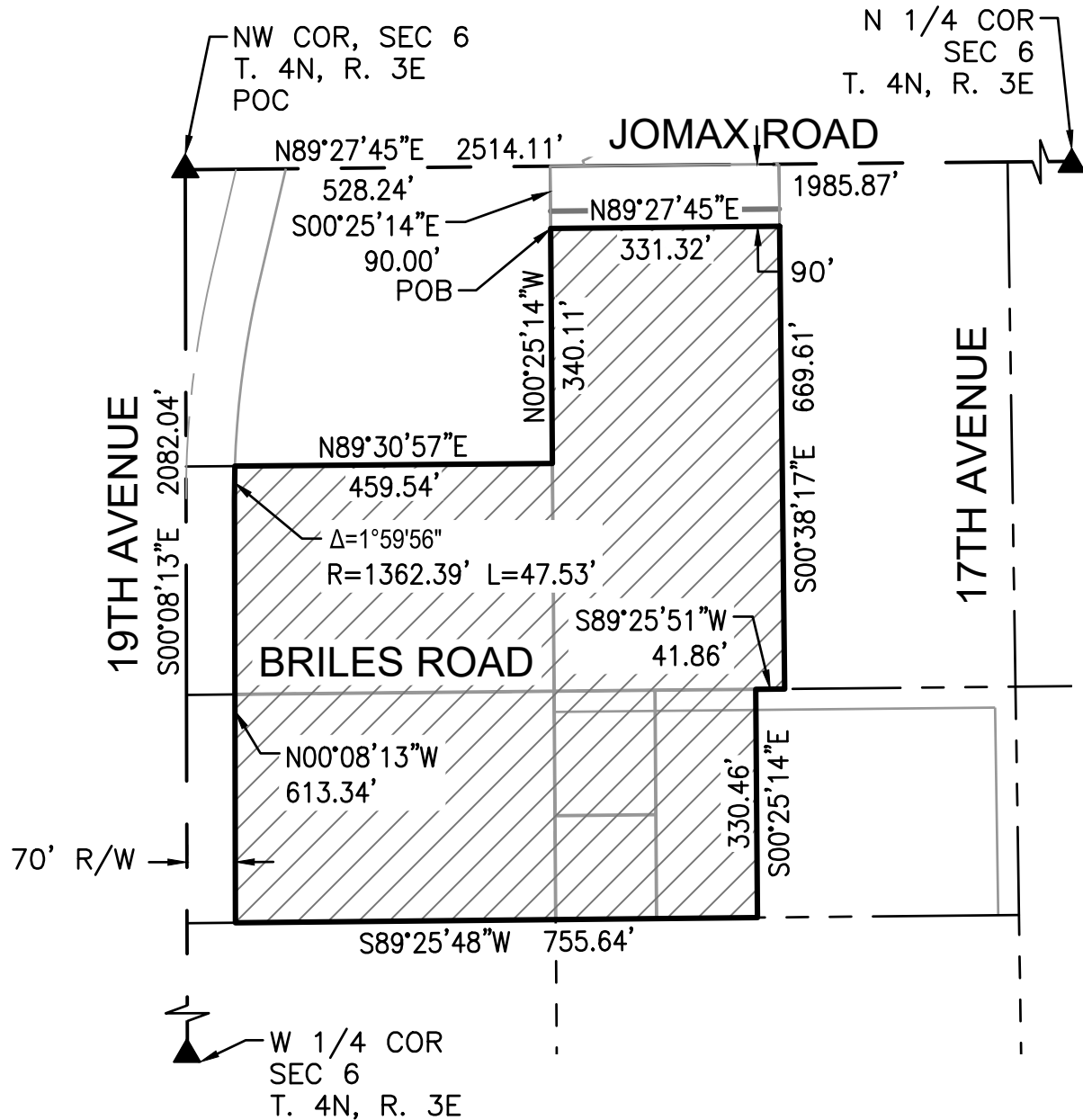
Closing course: 238°45'38.28" 0.004538

Misclosure: 1/791,002

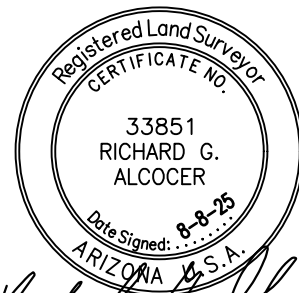
North Error: 0.002353

East Error: 0.003880






= ANNEXATION PARCEL AREA



Richard G. Alcocer

SCALE 1" = 250'	BRILES PASS	
EXHIBIT		
4550 North 12th Street Phoenix, Arizona 85014 Phone 602-264-6831 http://www.cvlci.com	ANNEXATION PARCEL	1 OF 1