

Attachment A  
**EXHIBIT A**  
**LEGAL DESCRIPTION**  
**SOUTHWEST GAS CORPORATION**  
**GRANT OF EASEMENT #1**

A portion of the Southeast Quarter (SE¼) of Section 29, Township 4 North, Range 3 East, of the Gila and Salt River Meridian, Maricopa County, Arizona, more particularly described as follows:

A strip of land 8.00 feet wide, 4.00 feet on each side of the following described centerlines:

Commencing at a (brass cap in handhole) monument, in the intersection of Union Hills Drive and 7<sup>th</sup> Street, at the Southeast (SE) Corner of said Section 29 which bears North 89°04'49" East, 2623.13 feet from a (brass cap in handhole) monument in the intersection of Union Hills Drive and Central Avenue at the South Quarter (S¼) Corner of said Section 29;

- Thence, South 89°04'49" West, along the Southerly boundary of said Section 29 and Union Hills Drive centerline, a distance of 1,627.04 feet;
- Thence, North 0°34'32" West a distance of 55.00 feet to a point on the Northerly right-of-way boundary of Union Hills Drive and the **POINT OF BEGINNING**;
- Thence, North 0°34'32" West a distance of 93.17 feet;
- Thence, North 77°32'03" East a distance of 11.57 feet;
- Thence, North 55°45'28" East a distance of 8.40 feet;
- Thence, North 7°54'35" East a distance of 15.73 feet;
- Thence, North 2°44'07" East a distance of 22.95 feet;
- Thence, North 1°17'37" East a distance of 57.67 feet;
- Thence, North 1°49'33" West a distance of 37.25 feet to a point hereafter called **POINT B**;
- Thence, North 19°06'56" West a distance of 14.80 feet;
- Thence, North 87°57'54" West a distance of 17.18 feet;
- Thence, North 0°46'04" West a distance of 40.49 feet to the **TERMINUS** of the described line.

**TOGETHER WITH:**

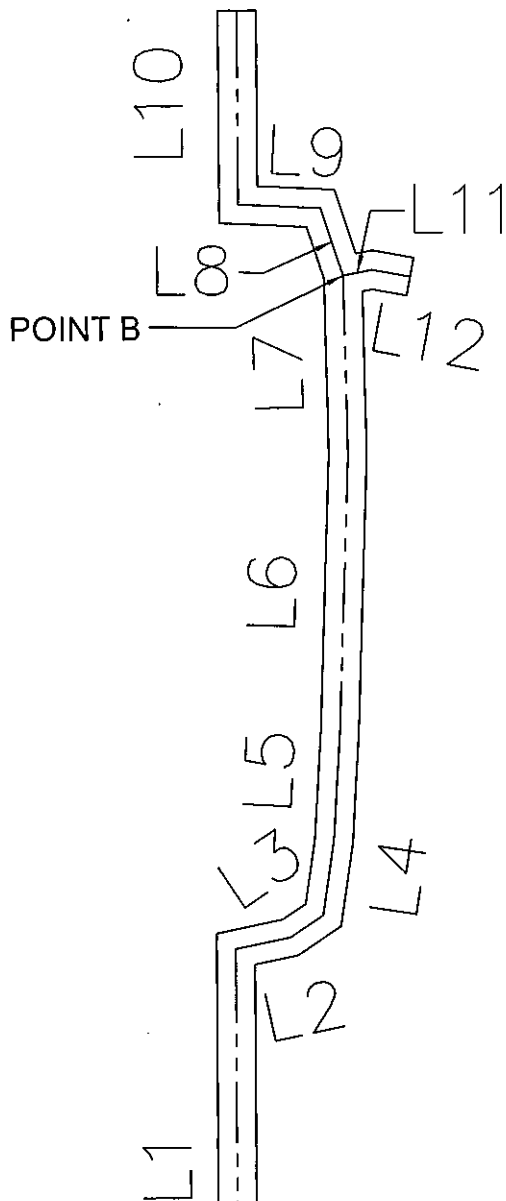
Beginning at the aforementioned **POINT B**;

- Thence, North 78°37'36" East a distance of 6.19 feet;
- Thence, South 79°55'01" East a distance of 8.20 feet to the **TERMINUS** of the described line.

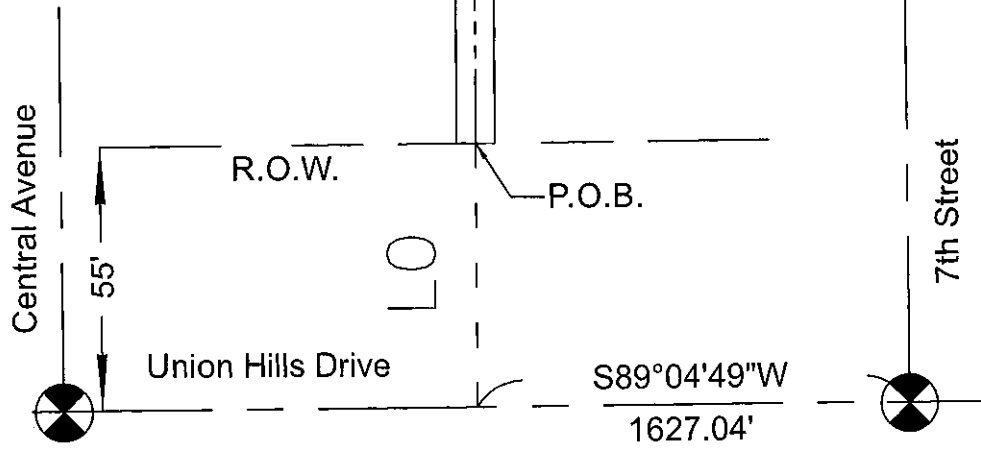
Said Easement strips containing 2,369 square feet or 0.05 acres, more or less.



Expires 6-30-18



NUM	BEARING	DISTANCE
L0	N0°34'32"W	55.00'
L1	N0°34'32"W	93.17'
L2	N77°32'03"E	11.57'
L3	N55°45'28"E	8.40'
L4	N7°54'35"E	15.73'
L5	N2°44'07"E	22.95'
L6	N1°17'37"E	57.67'
L7	N1°49'33"W	37.25'
L8	N19°06'56"W	14.80'
L9	N87°57'54"W	17.18'
L10	N0°46'04"W	40.49'
L11	N78°37'36"E	6.19'
L12	S79°55'01"E	8.20'



Registered Land Surveyor  
 CERTIFICATE NO.  
 39131  
 PAUL E. MILUSKI  
 Date Signed 11/3/16  
 ARIZONA, U.S.A.  
 Expires 6-30-18



**CITY OF PHOENIX**  
 Street Transportation Department  
 Design & Construction Management Division  
 Survey Section  
 1034 East Madison Street  
 Phoenix, Arizona 85034-2292  
 Front Desk: (602) 495-2050  
 FAX: (602) 495-3670

**SOUTHWEST GAS CORPORATION**  
**APN 209-12-004 EASEMENT**  
**EXHIBIT A**

Date: 11/03/16	Scale: NTS COP REF.	No. 2 of 2
----------------	------------------------	------------