



**LEGAL DESCRIPTION  
SIDEWALK EASEMENT  
PHOENIX, ARIZONA**

August 2, 2019  
Job No. 2017-173  
Page 1 of 1

AN EASEMENT LOCATED OVER PARCELS DESCRIBED IN THE "2<sup>ND</sup> AMENDED PARCEL MAP FOR COLLIER CENTER" AS RECORDED IN BOOK 1360, PAGE 25, RECORDS OF MARICOPA COUNTY, ARIZONA, RESIDING IN THE NORTHEAST QUARTER OF SECTION 8, TOWNSHIP 1 NORTH, RANGE 3 EAST, OF THE GILA AND SALT RIVER BASE AND MERIDIAN, MARICOPA COUNTY, ARIZONA, BEING MORE PARTICULARLY DESCRIBED AS FOLLOWS:

**BEGINNING** AT THE SOUTHEAST CORNER OF PARCEL 6 OF SAID BOOK 1360, PAGE 25, BEING THE BEGINNING OF A CURVE CONCAVE TO THE NORTH, OF WHICH THE RADIUS POINT LIES NORTH 16 DEGREES 20 MINUTES 22 SECONDS EAST;

THENCE WESTERLY ALONG SAID CURVE, HAVING A RADIAL DISTANCE OF 666.20 FEET, THROUGH A CENTRAL ANGLE OF 5 DEGREES 01 MINUTES 17 SECONDS, A DISTANCE OF 58.39 FEET;

THENCE ALONG A TANGENT LINE, NORTH 68 DEGREES 38 MINUTES 52 SECONDS WEST, A DISTANCE OF 59.82 FEET;

THENCE NORTH 20 DEGREES 19 MINUTES 18 SECONDS EAST, A DISTANCE OF 6.00 FEET;

THENCE SOUTH 69 DEGREES 40 MINUTES 42 SECONDS EAST, A DISTANCE OF 51.65 FEET;

THENCE NORTH 20 DEGREES 19 MINUTES 18 SECONDS EAST, A DISTANCE OF 2.78 FEET;

THENCE SOUTH 69 DEGREES 46 MINUTES 40 SECONDS EAST, A DISTANCE OF 57.89 FEET;

THENCE NORTH 00 DEGREES 00 MINUTES 02 SECONDS WEST, A DISTANCE OF 30.44 FEET;

THENCE NORTH 90 DEGREES 00 MINUTES 00 SECONDS EAST, A DISTANCE OF 0.33 FEET;

THENCE NORTH 00 DEGREES 00 MINUTES 00 SECONDS EAST, A DISTANCE OF 30.17 FEET;

THENCE NORTH 00 DEGREES 07 MINUTES 23 SECONDS WEST, A DISTANCE OF 148.08 FEET;

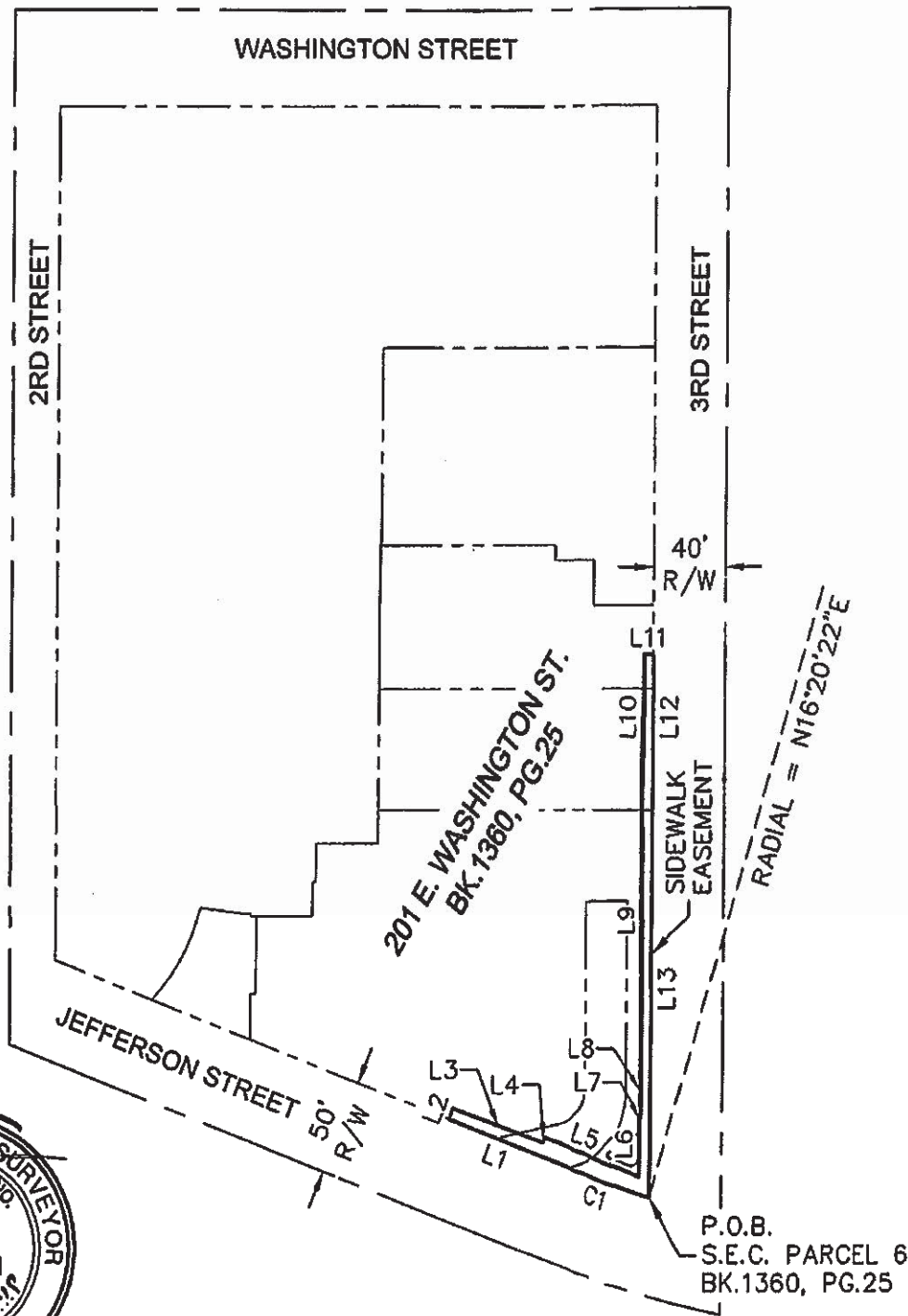
THENCE NORTH 00 DEGREES 23 MINUTES 46 SECONDS EAST, A DISTANCE OF 65.15 FEET;

THENCE NORTH 89 DEGREES 59 MINUTES 45 SECONDS EAST, A DISTANCE OF 4.54 FEET;

THENCE SOUTH 00 DEGREES 01 MINUTES 54 SECONDS EAST, A DISTANCE OF 65.31 FEET;

THENCE SOUTH 00 DEGREES 01 MINUTES 37 SECONDS EAST, A DISTANCE OF 219.46 FEET TO THE POINT OF **BEGINNING**.

SAID PARCEL CONTAINS 2,304 SQUARE FEET OR 0.053 ACRES, MORE OR LESS.



**SIG**  
SURVEY INNOVATION  
GROUP, INC

**EXHIBIT**  
**SIDEWALK EASEMENT**  
**PHOENIX, ARIZONA**

Ph (480) 922 0780 *Land Surveying Services* Fx (480) 922 0781  
22425 N. 16th ST., SUITE 1, PHOENIX, ARIZONA 85024

JOB #17-173	DWG:17-173 S.W.E. B-2-19	DATE 8/2/19
SCALE: NTS	DRAWN: ELS	CHK: JAS
		SHEET 1 OF 2

LINE TABLE		
LINE	DIRECTION	LENGTH
L1	N68°38'52"W	59.82'
L2	N20°19'18"E	6.00'
L3	S69°40'42"E	51.65'
L4	N20°19'18"E	2.78'
L5	S69°46'40"E	57.89'
L6	N0°00'02"W	30.44'
L7	N90°00'00"E	0.33'
L8	N0°00'00"E	30.17'
L9	N0°07'23"W	148.08'
L10	N0°23'46"E	65.15'
L11	N89°59'45"E	4.54'
L12	S0°01'54"E	65.31'
L13	S0°01'37"E	219.46'

CURVE TABLE				
CURVE	DELTA	RADIUS	LENGTH	CHORD
C1	5°01'17"	666.20'	58.39'	N71°09'00"W 58.37'



**SIG**  
**SURVEY INNOVATION**  
**GROUP, INC**

**EXHIBIT**  
**SIDEWALK EASEMENT**  
**PHOENIX, ARIZONA**

Ph (480) 922 0780 *Land Surveying Services* Fx (480) 922 0781  
 22425 N. 16th ST., SUITE 1, PHOENIX, ARIZONA 85024

JOB #17-173	DWG: 17-173 S.W.E. 8-2-19	DATE 8/2/19
SCALE: NTS	DRAWN: ELS	CHK: JAS
		SHEET 2 OF 2