

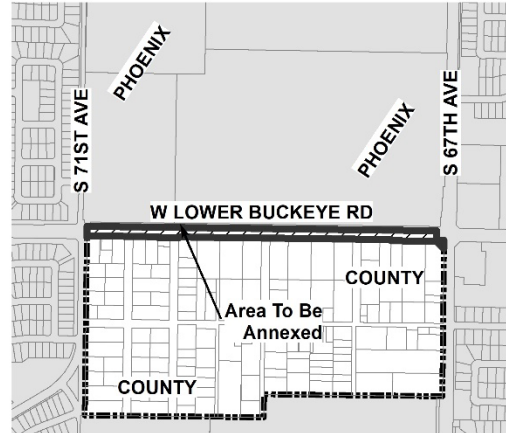
**ANNEXATION MAP**  
**67TH AVENUE AND**  
**LOWER BUCKEYE ROAD**



**City of Phoenix**

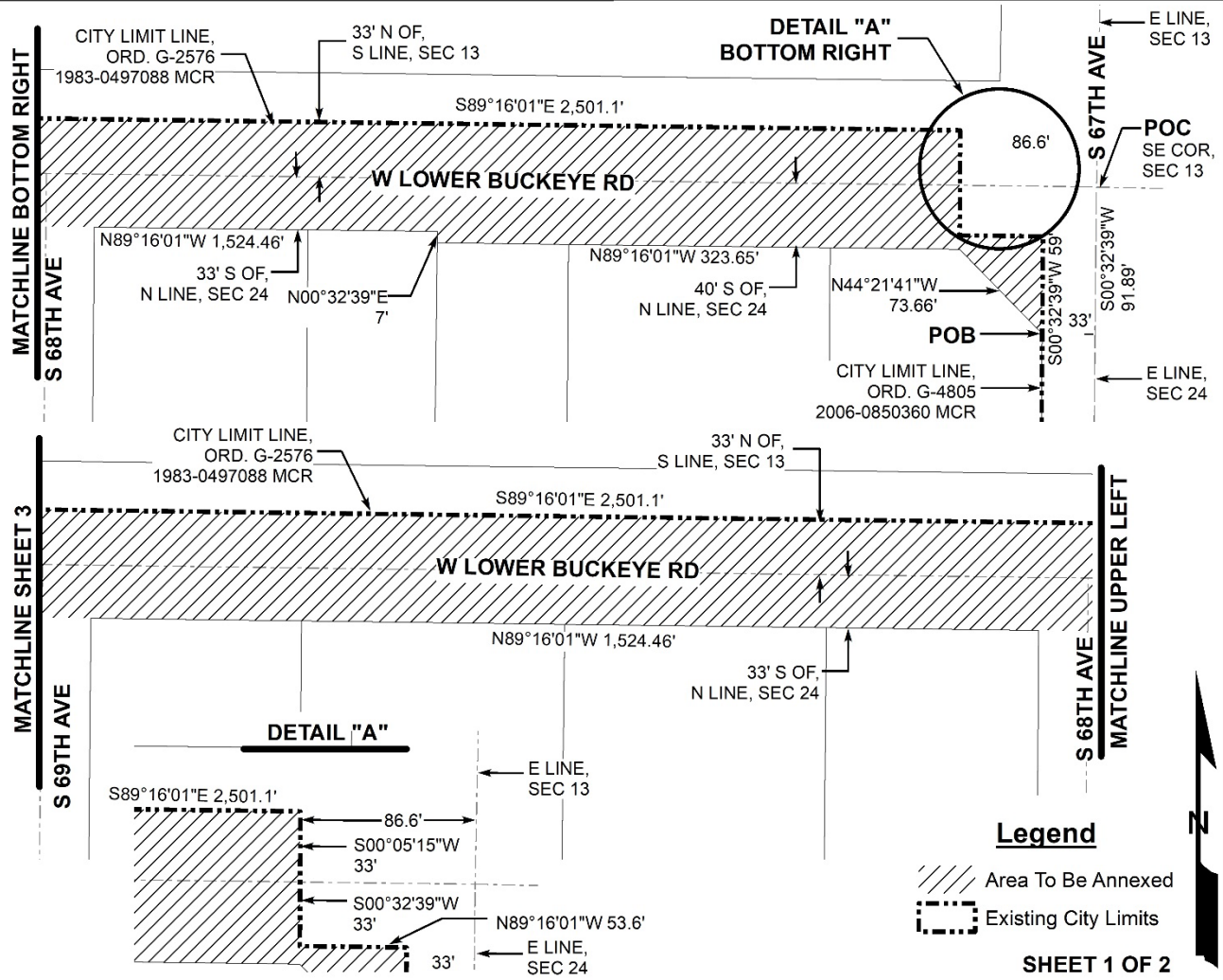
**LEGAL DESCRIPTION**  
 SECTION 24 T. 1 N., R. 1 E.,  
 G. & S. R. B. & M.

**VICINITY MAP**



**ANNEXATION NUMBER: 549**

AREA IN SQUARE MILES  
**0.0061**



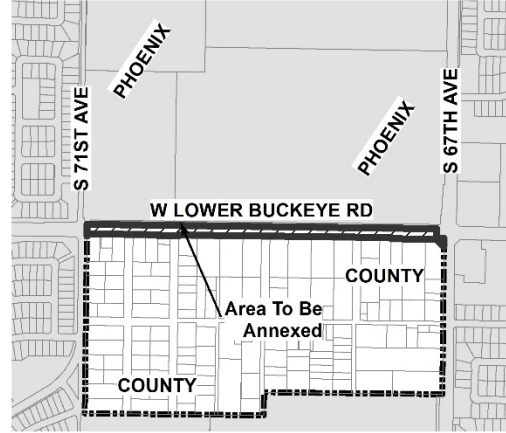
**ANNEXATION MAP**  
**67TH AVENUE AND**  
**LOWER BUCKEYE ROAD**



**City of Phoenix**

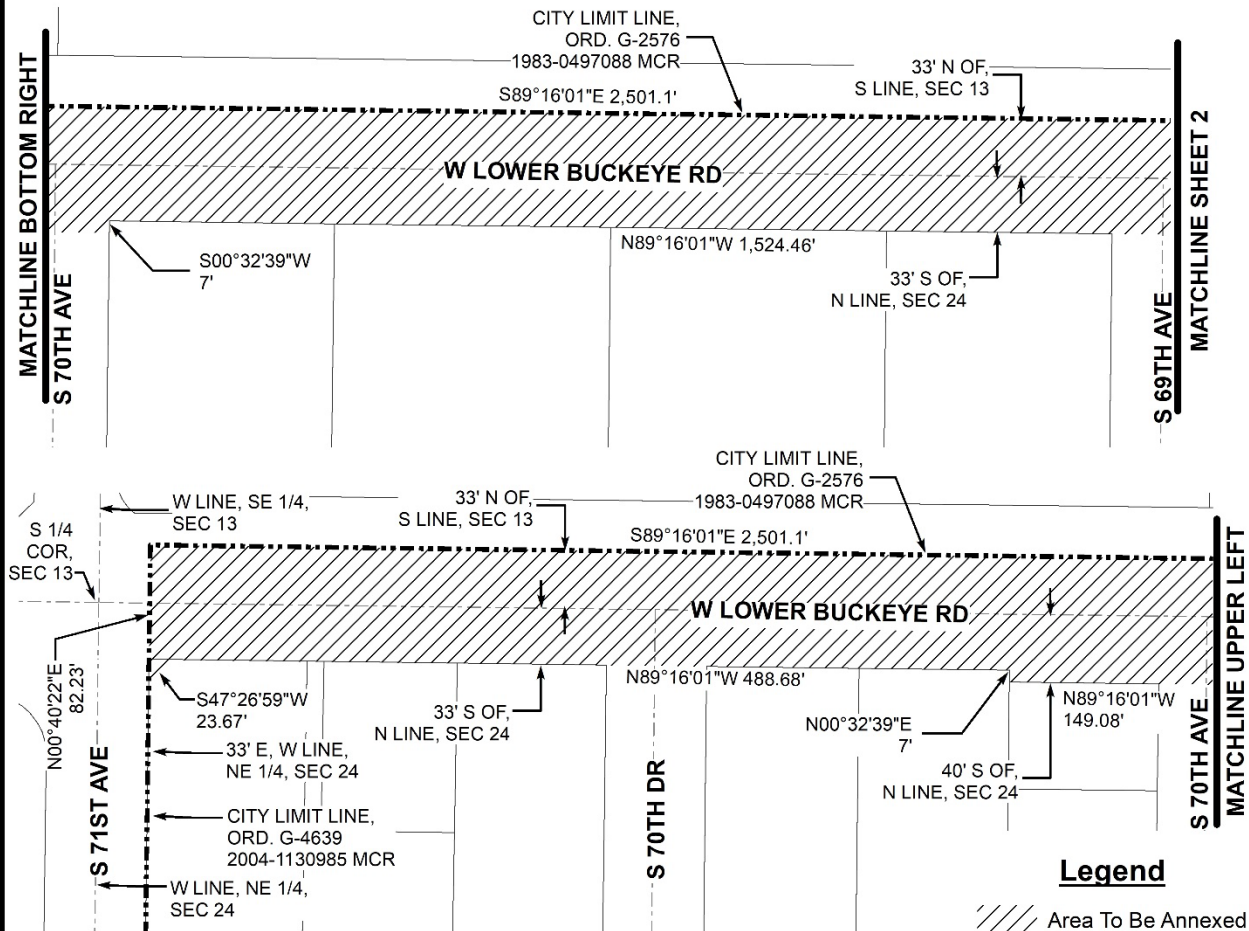
LEGAL DESCRIPTION  
 SECTION 24 T. 1 N., R. 1 E.,  
 G. & S. R. B. & M.

VICINITY MAP



**ANNEXATION NUMBER: 549**

AREA IN SQUARE MILES  
**0.0061**



**Legend**

- Area To Be Annexed
- Existing City Limits

## Legal Description

### 67<sup>th</sup> Avenue and Lower Buckeye Road

A parcel of land located within the Southeast Quarter of Section 13 and the Northeast quarter of Section 24, Township 1 North, Range 1 East, of the Gila and Salt River Meridian, Maricopa County, Arizona, described as follows:

**Commencing**, at the Southeast corner of said Section 13, marked by a City of Phoenix brass cap in a hand hole, from which the South quarter corner of said Section, marked by a City of Phoenix brass cap in a hand hole, bears, North 89 degrees 16 minutes 01 seconds West (Basis of Bearing), a distance of 2618.04' feet;

**Thence**, South 00 degrees 32 minutes 39 seconds West, along the East line of said Section 24, a distance of 91.89' feet;

**Thence**, leaving said East line, North 89 degrees 27 minutes 21 seconds West, a distance of 33.00' feet, to the **POINT OF BEGINNING**;

**Thence**, North 44 degrees 21 minutes 41 seconds West, a distance of 73.66' feet, to a point on a line parallel with and 40.00 feet South of the North line of said Section 24;

**Thence**, along said parallel line, North 89 degrees 16 minutes 01 seconds West, a distance of 323.65' feet;

**Thence**, leaving said parallel line, North 00 degrees 32 minutes 39 seconds East, a distance of 7.00' feet, to a point on a line parallel with and 33.00' feet South of the North line of said Section 24;

**Thence**, North 89 degrees 16 minutes 01 seconds West, along said parallel line, a distance of 1,524.46' feet;

**Thence**, South 00 degrees 32 minutes 39 seconds West, a distance of 7.00' feet, to a point on a line parallel with and 40.00' feet South of the North line of said Section 24;

**Thence**, along said parallel line, North 89 degrees 16 minutes 01 seconds West, a distance of 149.08' feet;

**Thence**, leaving said parallel line, North 00 degrees 32 minutes 39 seconds East, a distance of 7.00' feet, to a point on a line parallel with and 33.00' feet South of the North line of said Section 24;

**Thence**, North 89 degrees 16 minutes 01 seconds West, along said parallel line, a distance of 488.68' feet;

**Thence**, leaving said parallel line, South 47 degrees 26 minutes 59 seconds West, a distance of 23.67' feet, to a point on a line parallel with and 30.00' feet East of the West line of said Section 24;

**Thence**, North 00 degrees 40 minutes 22 seconds East, along said parallel line and it's Northerly prolongation, a distance of 82.23' feet, to a point on a line parallel with and 33.00' feet North of the South line of said Section 13;

**Thence**, South 89 degrees 16 minutes 01 seconds East, along said parallel line, a distance of 2,501.10' feet, to a point on a line parallel with and 86.60' feet West of the East line said Section 13;

**Thence**, leaving said parallel line, South 00 degrees 05 minutes 15 seconds West, along said parallel line, a distance of 33.00' feet, to the North line of said Section 24;

**Thence**, South 00 degrees 32 minutes 39 seconds West, along a line parallel with and 86.61' feet West of the East line of said Section 24, a distance of 33.00' feet, to a point on a line parallel with and 33.00' feet South of the North line of said Section 24;

**Thence**, leaving said parallel line, South 89 degrees 16 minutes 01 seconds East, along said parallel line, a distance of 53.61' feet, to a point on a line parallel with and 33.00' feet West of the East line of said Section 24;

**Thence**, leaving said parallel line, South 00 degrees 32 minutes 39 seconds West, along said parallel line, a distance of 59.00' feet, to the **POINT OF BEGINNING**.

Described parcel contains 170,255 square feet or 3.9085 acres, more or less.

Described parcel subject to existing rights-of-way and easements.



S. 1/4 CORNER  
SECTION 13  
T.1N., R.1E.  
B.C.H.

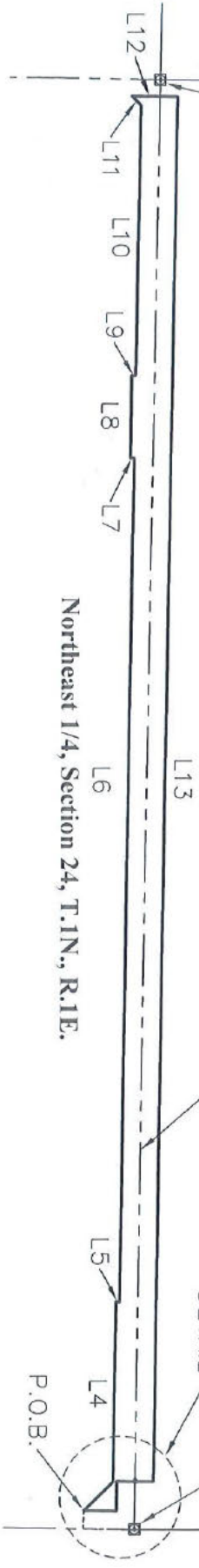
Southeast 1/4, Section 13, T.1N., R.1E.

W. Lower Buckeye Rd.  
N89°16'01"W (BASIS OF BEARING) 2618.04'

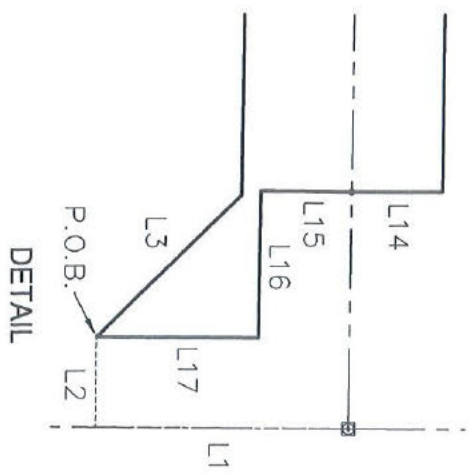
Northeast 1/4, Section 24, T.1N., R.1E.

P.O.C.  
S.E. CORNER  
SECTION 13  
T.1N., R.1E.  
B.C.H.

S. 67th Ave.



LINE TABLE		LINE TABLE		LINE TABLE	
LINE	BEARING	LENGTH	LINE	BEARING	LENGTH
L1	S00°32'39"W	91.89'	L7	S00°32'39"W	7.00'
L2	N89°27'21"W	33.00'	L8	N89°16'01"W	149.08'
L3	N44°21'41"W	73.66'	L9	N00°32'39"E	7.00'
L4	N89°16'01"W	323.65'	L10	N89°16'01"W	488.68'
L5	N00°32'39"E	7.00'	L11	S47°26'59"W	23.67'
L6	N89°16'01"W	1524.46'	L12	N00°40'22"E	82.23'
			L13	S89°16'01"E	2501.10'
			L14	S00°05'15"W	33.00'
			L15	S00°32'39"W	33.00'
			L16	S89°16'01"E	53.61'
			L17	S00°32'39"W	59.00'



P.O.C. = POINT OF COMMENCEMENT  
P.O.B. = POINT OF BEGINNING  
B.C.H. = BRASS CAP IN HAND HOLE

ANNEXATION EXHIBIT

LOWER BUCKEYE-67th AVE TO 71st AVE.  
PROJECT NO. CC6370002205

STREET TRANSPORTATION DEPARTMENT  
DESIGN AND CONSTRUCTION MANAGEMENT

**City of Phoenix**

PAGE 3 OF 3

DATE: 8/13/24

DSN: MJS

DRN: JJS

CHK: VKM



*Michael J. Sexton*

